

DAYTONA

CAFE RACER 250

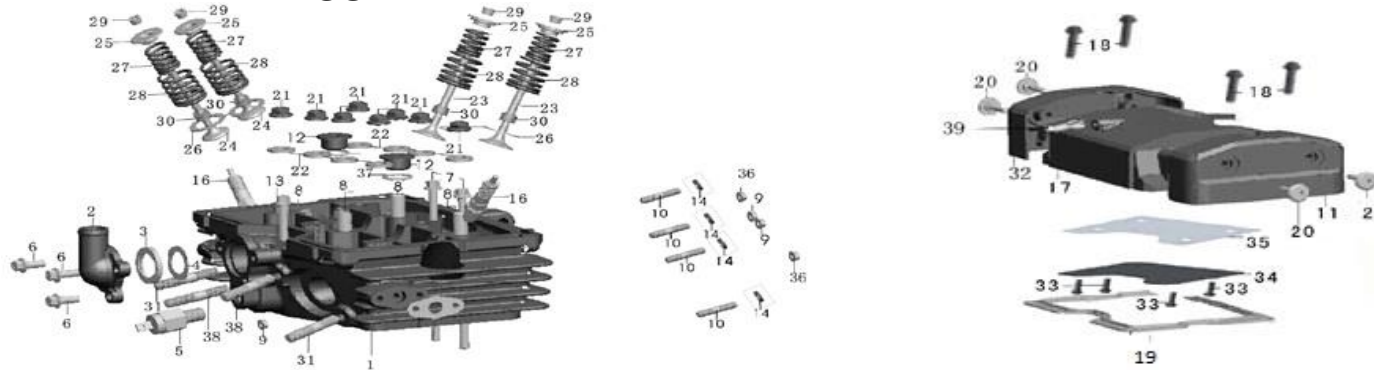


CONTENTS

ENGINE PART

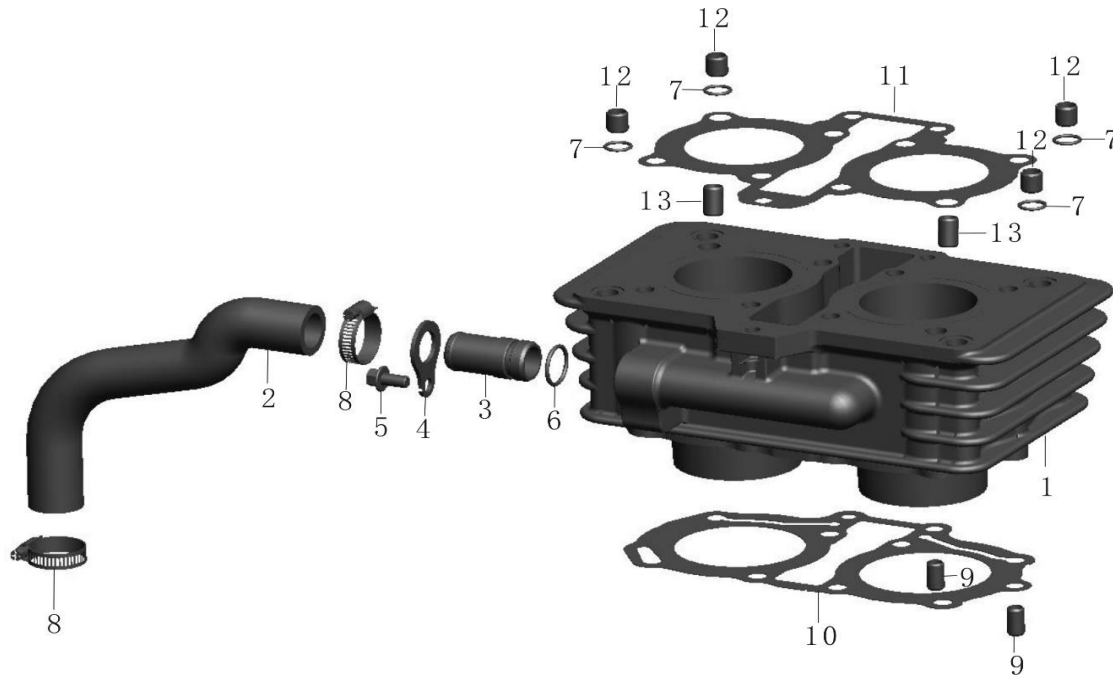
CYLINDER HEAD ASSY	3
CYLINDER ASSY	4
CRANKCASE ASSY	5
CRANKSHAFT CONNECTING ROD PISTON ASSY	6
ALLOT AIR ORGANIZATION ASSY	7
OIL PUMP ASSY	8
CLUTCH ASSY	9
LEFT CRANKCASE COVER ASSY	10
STARTING ASSY	11
ELECTRICAL SYSTEM	12
RIGHT CRANKCASE COVER ASSY	13
TRANSMISSION ASSY	14
WATER PUMP ASSY	15
BALANCESHAFT AASSY	16
LEFT REAR CRANKCASE COVER ASSY	17
COOLING SYSTEM	18

E-1 : CYLINDER HEAD ASSEMBLY



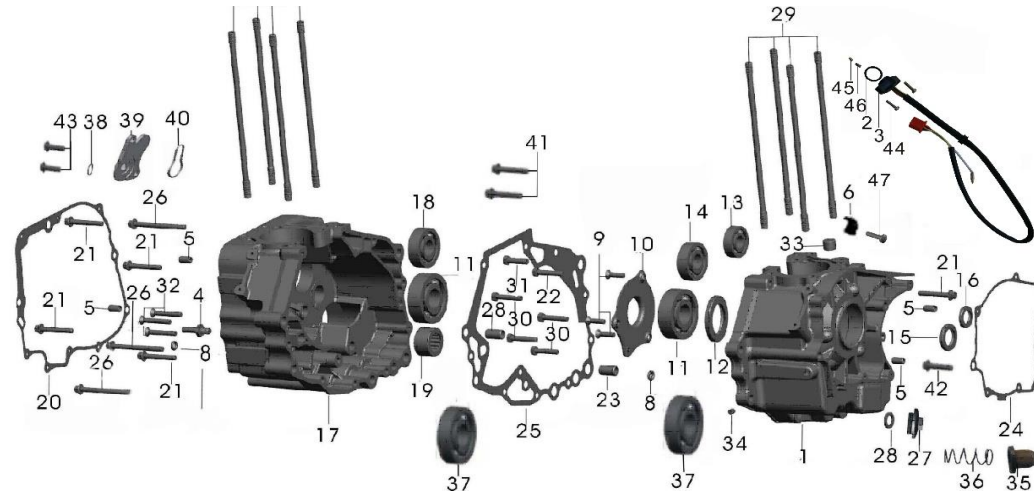
NO.	PART CODE	DESCRIPTION	QTY	REMARK	NO.	PART CODE	DESCRIPTION	QTY	REMARK
1	2.25.0101.11018	cylinder head assy	1	15°	21	2.20.0101.0050R	Nut M8, cylinder cover	8	
2	2.22.0101.02508	cylinder water pipe connect	1		22	2.20.0101.0060R	Washer 8	8	
3	2.23.0117.32200	rusher,thermosat	1		23	2.20.0101.00700	Vavle, intake	2	
4	2.23.0117.32100	rubber seat,thermosat	1		24	2.20.0101.00800	Vavle,exhaust (SUH38)	2	
5	2.24.0118.00200	water temperature sensor	1		25	2.20.0101.00900	upper loop,Vavle spring	4	
6	2.99.06.060160S	Bolt M6*16	3		26	2.20.0101.01100	Seat,vavle spring outer	4	
7	2.20.0101.0170R	Bolt M6*145	2	;	27	2.20.0101.01200	Spring,vavle inner	4	
8	2.20.0101.01900	Sleeve 10*28	4		28	2.20.0101.01300	Spring, vavle outer	4	
9	2.99.42.060000R	Nut M6-ZnD	3		29	2.20.0101.01400	Valve clamp	8	
10	2.30.0101.0220R	two ends bolt M6*35	4		30	2.20.0101.02000	Seal, valve pipe	4	
11	2.27.0101.02308	cylinder head cover left side cover	1		31	2.20.0101.0150R	Two end bolt M8*45, valve pipe	2	
12	2.33.0101.10700	Bolt stops 18*1.5	2		32	2.27.0101.02708	cylinder head cover right side cover	1	
13	2.23.0101.0180S	Bolt M6*83	1		33	2.99.26.060120R	Bolt M6*12	4	
14	1.99.56.0600000	Washer	4		34	2.19.0101.04200	cylinder head cover press plate	1	
16	2.20.0101.50020	Plug, spark CR6HSA(NGK)	2		35	2.19.0101.04100	cylinder head cover plate gasket	1	
17	2.19.0101.00108	cover,cylinder head	1		36	2.99.43.060000R	Nut M6-ZnD	2	
18	2.23.0116.0110R	Bolt M6*29	4		37	2.23.0101.10100	O ring 15.2x2.5	2	
19	2.20.0101.00300	Washer,cylinder cover	1		38	2.24.0101.0150R	exhaust two ends bolt M8x55	2	
20	2.20.0101.0040S	Conjunction screw,cylinder cover	4		39	2.20.0103.1090R	Rubber pipe sleeve	1	

E-2 : CYLINDER ASSEMBLY



NO.	PART CODE	DESCRIPTION	QTY	REMARK	NO.	PART CODE	DESCRIPTION	QTY	REMARK
1	2.23.0102.10600	Cylinder comp	1		10	2.25.0102.00200	cylinder down gasket	1	
2	2.23.0102.00410	hose,cylinder	1		11	2.25.0102.00300	cylinder up gasket	1	
3	2.23.0101.0250S	Hose connector	1		12	2.23.0102.00600	Pin dowel 10*10	4	
4	2.23.0101.0240S	Hose connector setting plate	1		13	2.20.0101.01600	Pin 10*16	2	
5	2.99.26.060120S	bolt M6X12	1						
6	2.23.0101.02600	O-ring \$17*2	1						
7	2.20.0101.10300	O-ring 10*1.6	4						
8	2.23.0117.01000	Hose clip \$27	2						
9	2.20.0102.00100	Pin, dowel 8*14	2						

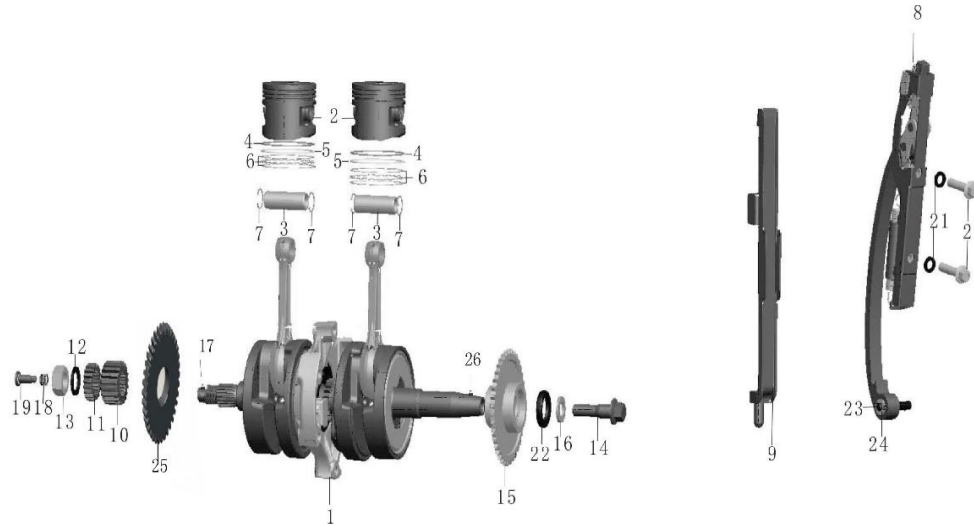
E-3 : CRANKCASE ASSEMBLY



NO.	PART CODE	DESCRIPTION	QTY	REMARK	NO.	PART CODE	DESCRIPTION	QTY	REMARK
1	2.23.0103.19028	Left crankcase	1		16	2.20.0103.16000	Oil seal(11.6*24*10)	1	
2	2.20.0103.17220	transmission indicator O ring	1		17	2.25.0103.21009	Right crankcase	1	
3	2.20.0103.17040	Transmission indicator (570)	1		18	2.99.70.0630400	Roller bearing 6304/P6	1	
4	2.20.0103.02200	Pin shift	1		19	2.20.0103.22000	Needle-bearing NK152312	1	
5	2.20.0102.00100	Pin, dowel 8*14	4		20	2.22.0103.00100	gasket,right crankcase cover (non asbe	1	
6	2.20.0103.11200	wire clip	1		21	2.20.0112.0010S	Bolt M6*40	5	
8	2.22.0103.02500	bolt	1		22	2.20.0103.0210R	Bolt M8*1*30	1	
9	2.99.05.060160R	Screw M6*16	3		23	2.20.0103.00500	Sleeve 12*20	2	
10	2.20.0103.12000	Oil plate	1		24	2.20.0103.00600	Gasket, side spacer	1	
11	2.99.70.0630500	Bearing 6305-Z/P6	2		25	2.22.0103.00720	gasket, crankcase (non asbestos)	1	
12	2.20.0103.13000	Oil seal (35*52*7)	1		26	2.20.0108.0060S	Bolt M6*65	3	
13	2.99.70.0602200	bearing 6202	1		27	2.90.0100.08300	valve cover	1	
14	2.20.0103.14000	Bearing 22*47*14	1		28	2.90.0101.01800	O-ring	1	
15	2.20.0103.15000	Oil seal (22*34*7)	1		29	2.20.0103.01500	Bolt,cylinder head stud	8	
16	2.20.0103.16000	Oil seal(11.6*24*10)	1		30	2.20.0103.0160R	Bolt M8*1*35	4	

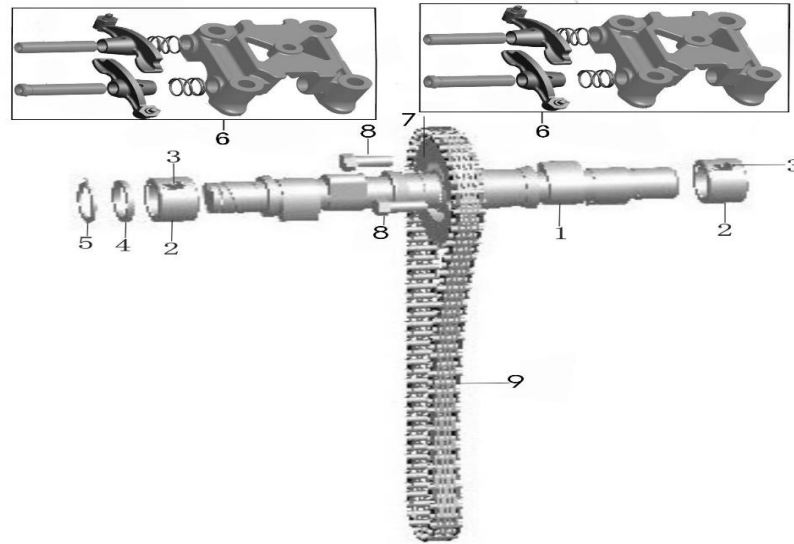
31	2.22.0103.02400	bolt	1	
32	2.99.05.060320R	Screw M6*32-ZnD	3	
33	2.20.0103.10100	Big head	1	
34	2.20.0103.10200	Small headφ6	3	
35	2.52.0103.09200	screen,oil filter	1	
36	2.19.0112.00400	spring,oil filter	1	
37	2.99.70.0630110	bearing 6301/P5	2	
38	2.20.0103.11100	O-ring (6*3)	2	
39	2.22.0103.0240R	bolt	1	
40	2.22.0106.02600	Shaft,oil pump	1	
41	2.20.0113.0010S	bolt M6*64	2	
42	1.99.26.0603500	Bolt M6x35	1	
43	2.99.04.0500800	screw M5X8	2	
44	2.99.04.0401800	screw M4X18	2	
45	2.20.0114.61100	Drum gearshift	1	
46	2.20.0114.61200	Drum gearshift	1	
47	2.99.04.0401600	screw M4X16	1	

E-4 : CRANKSHAFT CONNECTING ROD PISTON ASSEMBLY



NO.	PART CODE	DESCRIPTION	QTY	REMARK	NO.	PART CODE	DESCRIPTION	QTY	REMARK
1	2.20.0104.10030	crankshaft assy	1		14	2.20.0104.0060R	Bolt,rotor set	1	
2	2.23.0104.20100	Piston	2		15	2.20.0104.00700	Sprocket,cam chain	1	
3	2.23.0104.20200	Pin,piston	2		16	2.20.0104.00800	Washer 12	1	
4	2.23.0104.20300	1st piston ring	2		17	2.20.0104.00900	Pin 2*14	1	
5	2.23.0104.20400	1st piston ring	2		18	2.20.0104.01100	Spring,, oil outlet pipe	1	
6	2.23.0104.21100	Ring	2		19	2.20.0104.01200	Outlet oil pipe	1	
	2.23.0104.21200	Ring	4		20	2.20.0104.0130R	Bolt M6*26	2	
7	2.20.0104.20500	Piston ring	4		21	2.20.0104.01400	Washer 6	2	
8	2.20.0104.30020	Chain tensioner assy	1		22	2.20.0104.02000	Oil seal(22*31*5)	1	
9	2.20.0104.00110	Guide, chain stopper	1		23	2.20.0104.01500	Washer 6	1	
10	2.20.0104.00200	Gear,primary drive	1		24	2.20.0104.01600	Flexible spring	1	
11	2.20.0104.00300	Gear, pumb drive	1		25	2.22.0104.11602	driven tooth, balance shaft	1	
12	2.20.0104.00400	Washer,lock	1		26	2.20.0104.11200	Connecting rod, crankshaft	1	
13	2.20.0104.0050R	Nut,hex M16*1	1						

E-5 : ALLOT AIR ORGANIZATION ASSEMBLY



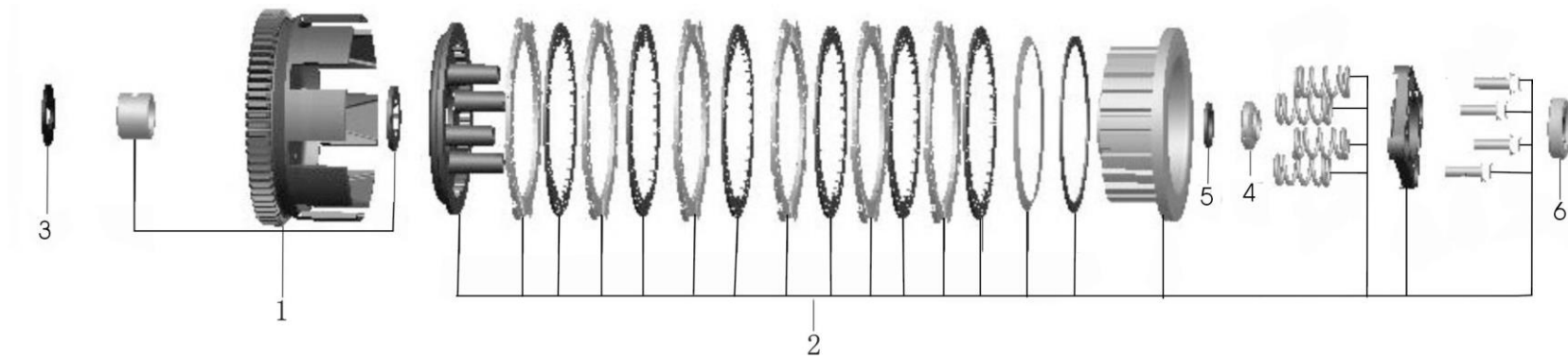
NO.	PART CODE	DESCRIPTION	QTY	REMARK
1	2.20.0105.10110	Camshaft	1	
2	2.20.0105.10210	Bush,camshaft	2	
3	2.20.0105.10300	Pin,dowel bush camshaft	2	
4	2.99.63.0200000	Circlip,externa(20)	1	
5	2.20.0105.10500	Washer,camshaft	1	
6	2.23.0105.20010	Holder comp,camshaft(M8)	2	
7	2.20.0105.00130	Sprocket,cam	1	
8	2.20.0105.0020C	Bolt M7*13	2	
9	2.20.0105.30000	Chain,cam	1	

E-6 : OIL PIMP ASSEMBLY



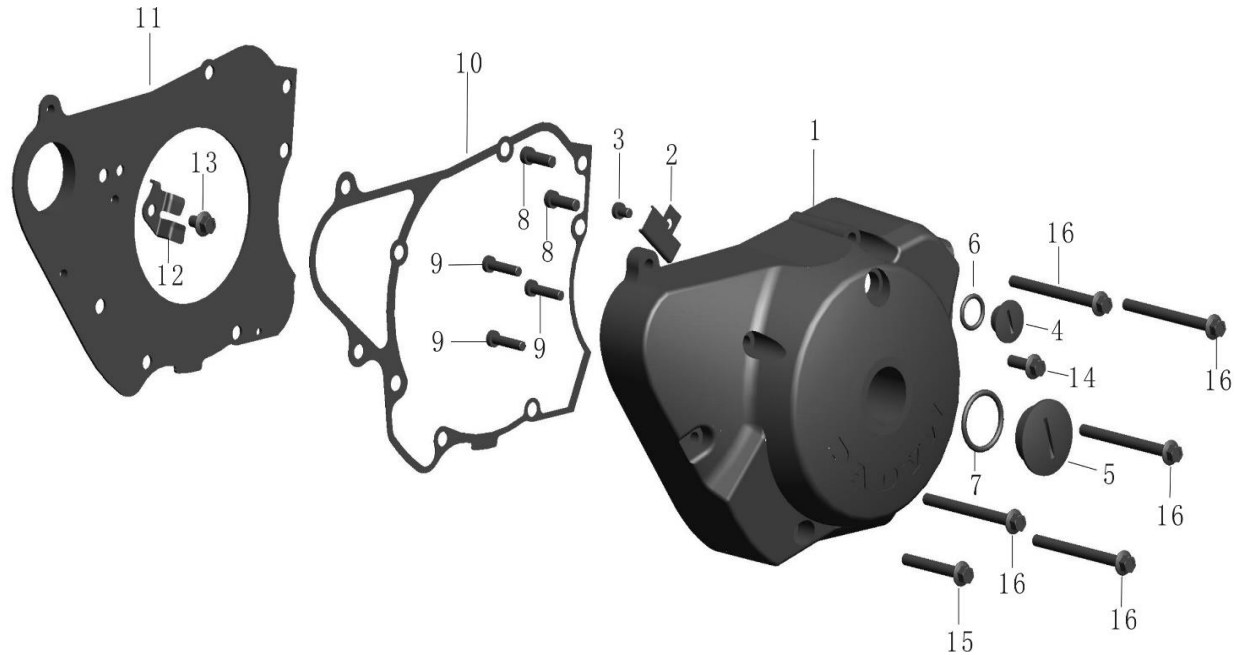
NO.	PART CODE	DESCRIPTION	QTY	REMARK
1	2.22.0106.00000	Shaft,oil pump	1	

E-7 : CLUTCH ASSEMBLY



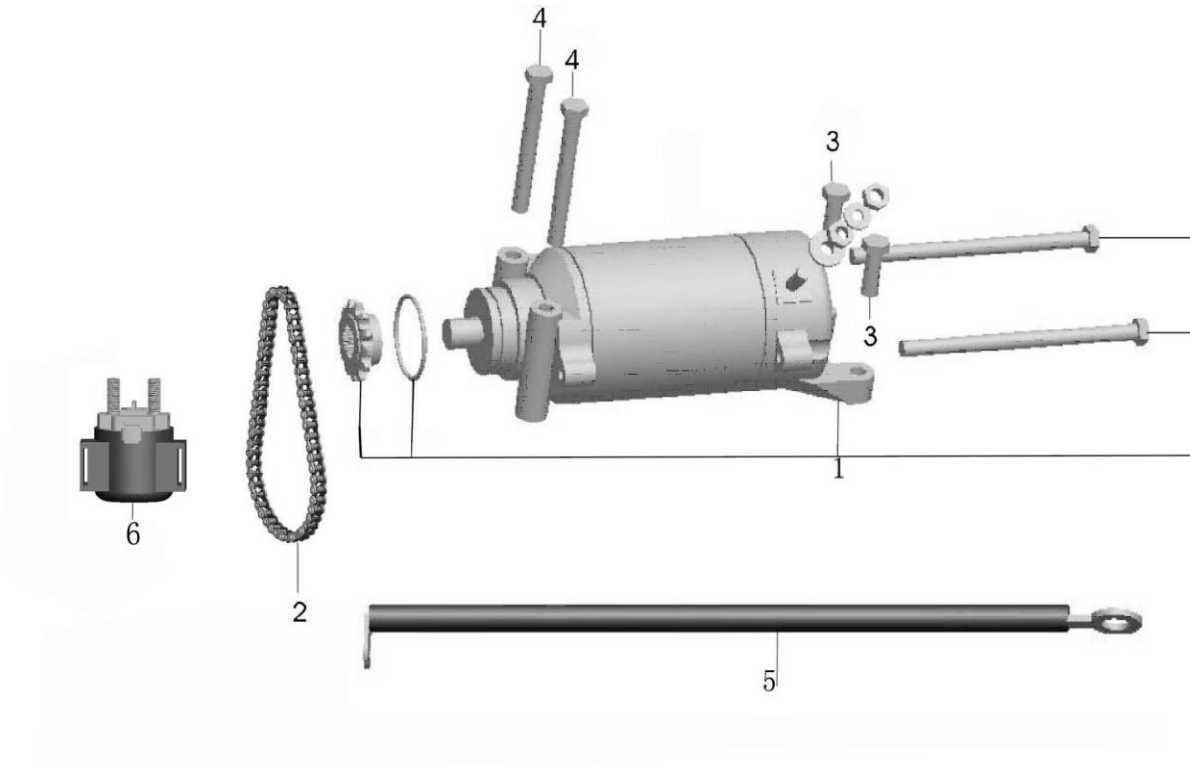
NO.	PART CODE	DESCRIPTION	QTY	REMARK
1	2.20.0107.11000	Outer comp,clutch	1	
2	2.25.0107.12000	center frame assy	1	
3	2.20.0107.00100	Washer 20	1	
4	2.20.0107.00200	Nut	1	
5	2.20.0107.00300	Washer,thrust	1	
6	2.20.0107.20000	Pushing bearing	1	

E-8 : LEFT CRANKCASE COVER ASSEMBLY



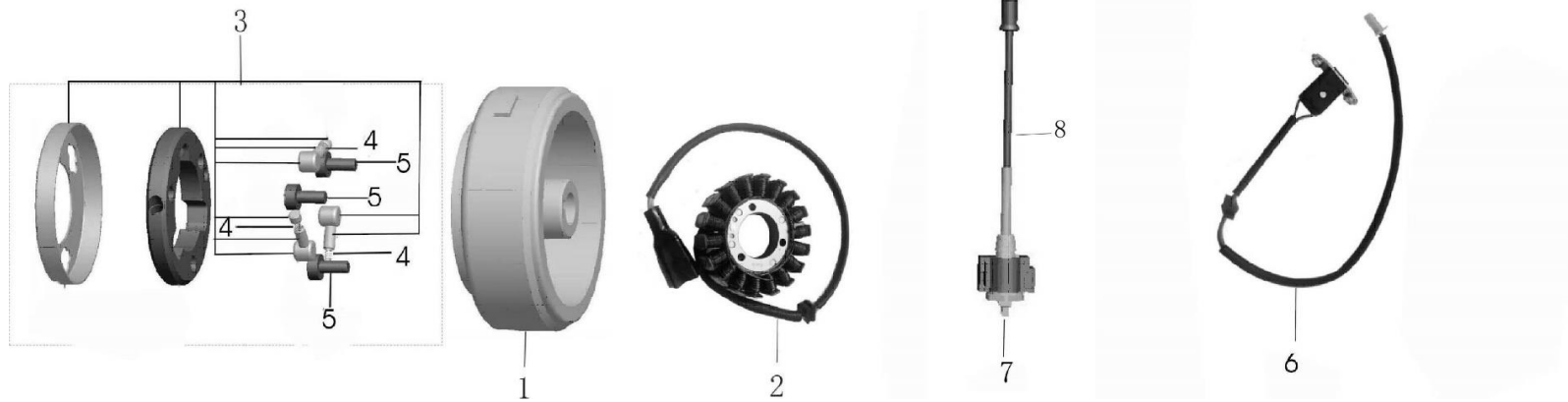
NO.	PART CODE	DESCRIPTION	QTY	REMARK	NO.	PART CODE	DESCRIPTION	QTY	REMARK
1	2.20.0108.10208	Clamper,cord	1		11	2.20.0108.0020R	Spacer ,left	1	
2	2.20.0108.1020R	Clamper,cord	1		12	2.20.0108.00300	Plate,starting sprocket setting	1	
3	2.99.03.050080R	Screw, hex M5*8	1		13	2.99.26.060100R	Bolt M6x10	1	
4	2.20.0108.1030S	Screw M14*1.5	1		14	2.20.0108.0040S	Bolt M6*20	1	
5	2.20.0108.1040S	Screw M30*1.5	1		15	2.20.0112.0020S	Bolt M6*50	1	
6	2.20.0108.10500	O-ring 13.8*2.5	1		16	2.20.0108.0060S	Bolt M6*65	5	
7	2.20.0108.10600	O-ring 25.8*3.1	1						
8	2.99.03.060200R	Screw M6*20	2						
9	2.99.03.050250R	Screw socket M5*25	3						
10	2.20.0108.00100	Gasket,left crankcase cover	1						

E-10 : STARTING ASSEMBLY



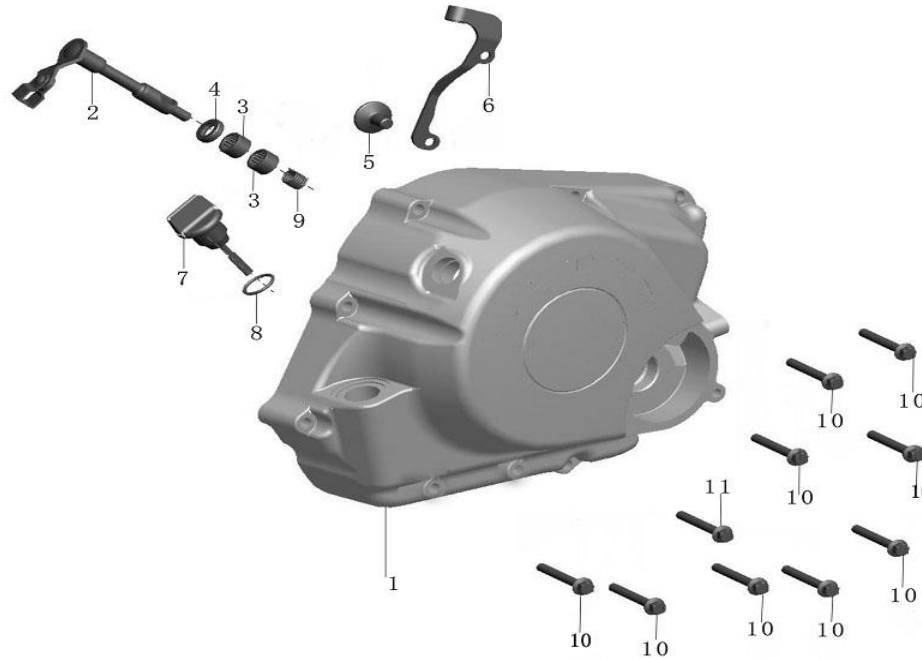
NO.	PART CODE	DESCRIPTION	QTY	REMARK
1	2.20.0110.10000	start motor	1	
2	2.20.0110.30000	Chain,starting	1	
3	2.20.0110.0010S	Bolt M6*22	2	
4	2.20.0108.0060S	Bolt M6*65	2	
5	2.20.0110.11010	Start motor cable L:1200mm	1	
6	2.20.0110.20000	Start magnetic	1	

E-11 : ELECTRICAL SYSTEM



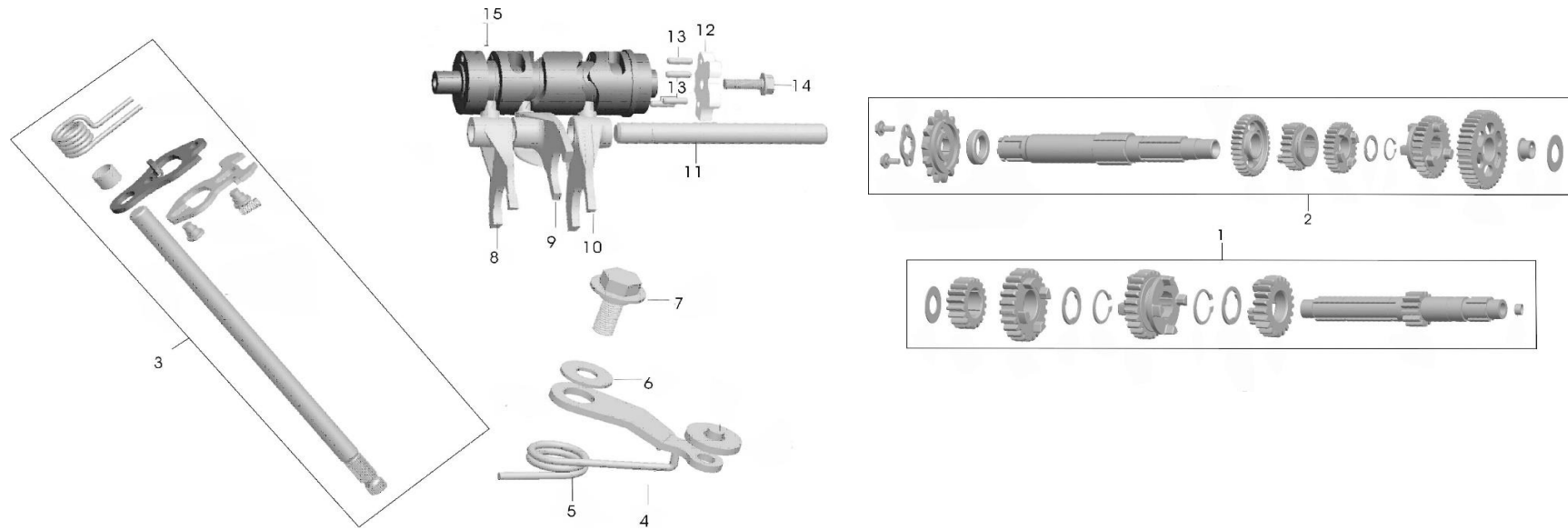
NO.	PART CODE	DESCRIPTION	QTY	REMARK
1	2.22.0111.11010	Stator comp	1	
2	2.23.0111.12000	Stator comp	1	
3	2.22.0111.13000	Starting clutch	1	
4	2.20.0111.13400	spring	3	
5	2.99.03.080160R	Screw M8X16	3	
6	2.29.0111.15000	sensor sepreate assy	1	
7	2.22.0118.00400	ignition coil	2	
8	2.20.0111.30520	high damping wire	2	

E-12 : RIGHT CRANKCASE COVER ASSEMBLY



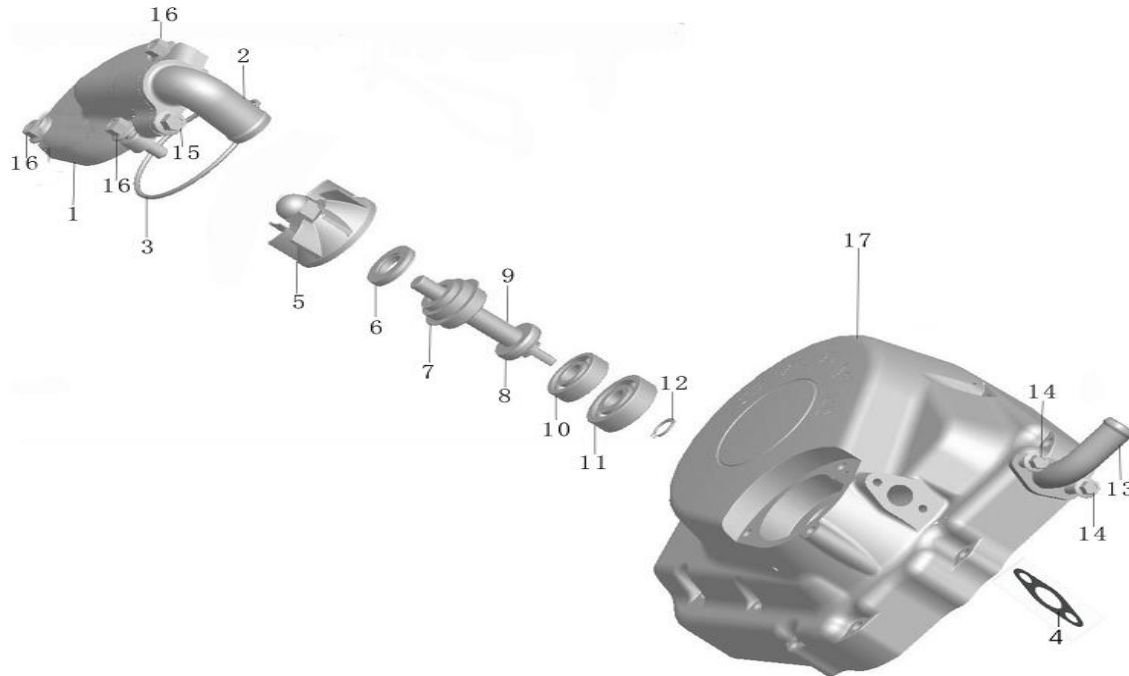
NO.	PART CODE	DESCRIPTION	QTY	REMARK	NO.	PART CODE	DESCRIPTION	QTY	REMARK
1	2.23.0112.10210	right crankcase cover assy	1	亮光黑	10	2.20.0112.0010S	Bolt M6*40	9	
2	2.20.0112.1100S	Lever comp clutch	1		11	2.20.0112.0020S	Bolt M6*50	1	
3	2.20.0112.12000	Bearing HK1210	2						
4	2.20.0112.13000	Oil seal(12*18*5)	1						
5	2.20.0112.10200	Pin,clutch lifter	1						
6	2.20.0112.1031S	Receiver,clutch cable	1						
7	2.20.0112.14000	oil gauge	1						
8	2.20.0112.14200	O-ring (18*3)	1						
9	2.20.0112.10600	Twist spring	1						

E-13 : TRANSMISSION ASSEMBLY



NO.	PART CODE	DESCRIPTION	QTY	REMARK	NO.	PART CODE	DESCRIPTION	QTY	REMARK
1	2.20.0114.10000	mainshaft	1		9	2.20.0114.00200	Fork,center gearshift	1	
2	2.20.0114.20030	countershaft assy	1		10	2.20.0114.00300	Fork,right gearshift	1	
3	2.20.0114.30020	shift pole assy	1		11	2.20.0114.00400	Shaft,gearshift fork guide	1	
4	2.20.0114.50000	Stopper comp,gearshift drum	1		12	2.20.0114.00500	Plate,drum stopper	1	
5	2.20.0114.50110	Spring,shift drum stopper(170)	1		13	2.20.0114.00600	Pin,gearshift drum	4	
6	2.20.0114.50200	Washer 6	1		14	2.20.0114.0070R	Screw M6*20	1	
7	2.20.0114.5030R	Screw M6*12	1		15	2.20.0114.60020	Drum gearshift	1	
8	2.20.0114.00100	Fork,left gearshift	1						

E-14 : WATER PUMP ASSEMBLY



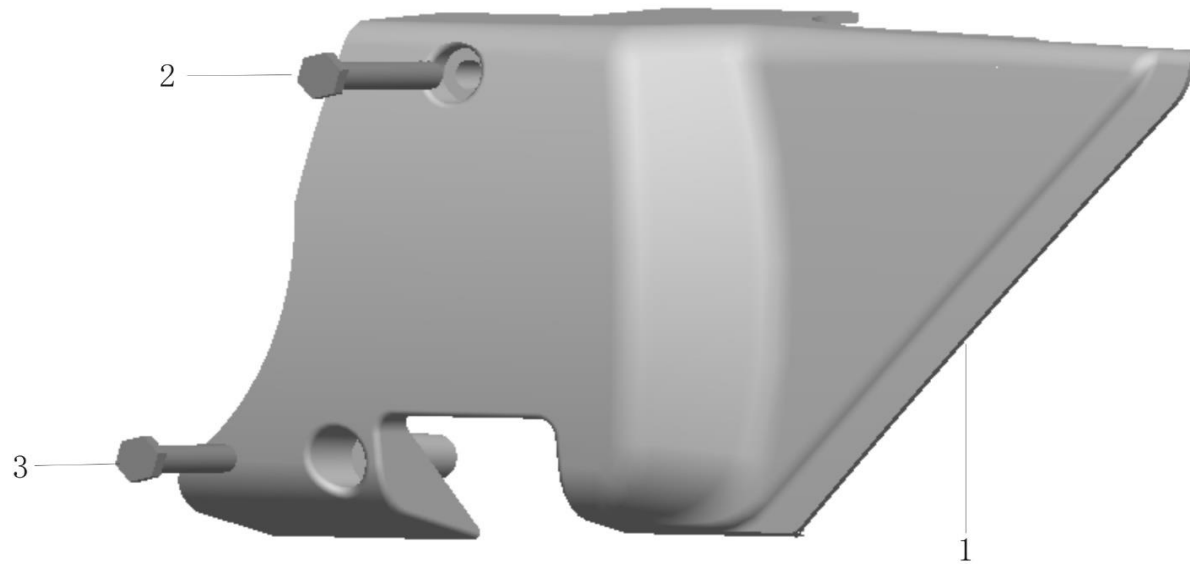
NO.	PART CODE	DESCRIPTION	QTY	REMARK	NO.	PART CODE	DESCRIPTION	QTY	REMARK
1	2.23.0116.00216	water pump cover(matte black)	1		10	2.99.70.0600000	Bearing 6000	1	
2	2.23.0116.10208	water pump inlet joint			11	2.99.70.0620000	Bearing6200	1	
3	2.23.0116.00610	seal ring	1		12	2.99.63.0800000	Retaining ring 8	1	
4	2.23.0112.11000	water pipe joint gasket	1		13	2.23.0112.1090R	hose connector	1	
5	2.23.0116.00402	Fan	1		14	2.99.06.060160S	Bolt M6*16	2	
6	2.23.0116.20000	Water seal B(700-10-2440)	1		15	2.99.26.060120S	bolt M6X12	1	
7	2.23.0116.10000	Water seal A	1		16	2.20.0108.0040S	Bolt M6*20	3	
8	2.23.0116.30000	Oil seal 10*21*5	1						
9	2.23.0116.00310	water pump axle	1						

E-15 : BALANCESHAFT ASSY



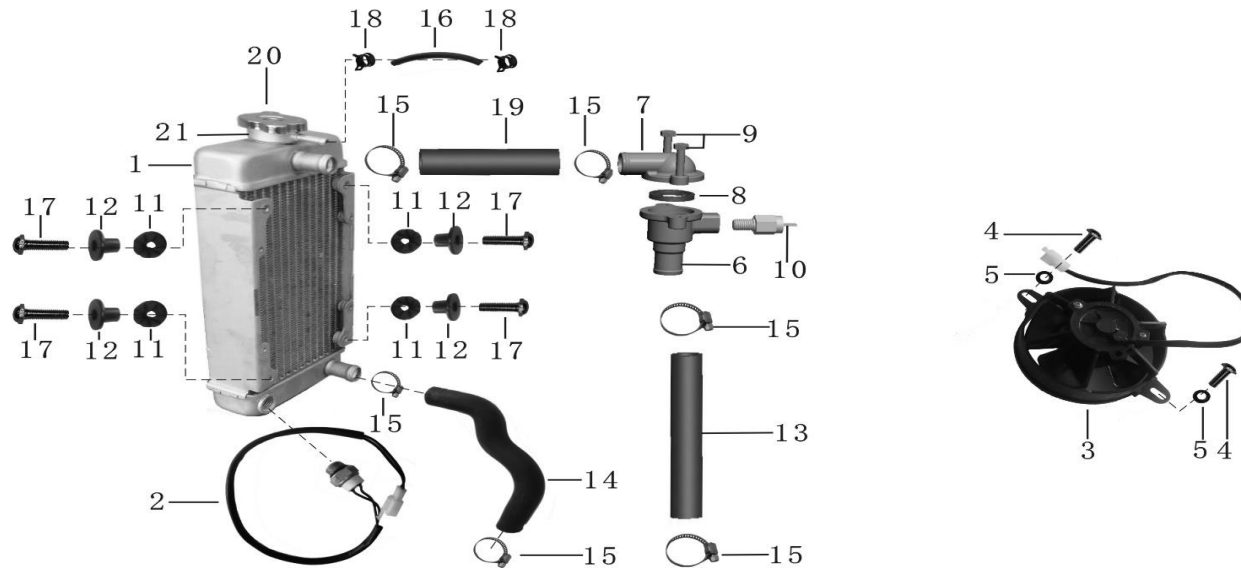
NO.	PART CODE	DESCRIPTION	QTY	REMARK
1	2.22.0104.40000	balance shaft assy	1	
2	2.22.0104.40202	passive tooth,balance shaft	1	

E-16 : LEFT REAR CRANKCASE COVER ASSEMBLY



NO.	PART CODE	DESCRIPTION	QTY	REMARK
1	2.20.0113.10004	Left rear crankcase cover	1	
2	2.20.0113.0010S	Bolt M6*46	1	
3	2.20.0113.0020S	Bolt M6*60	1	

E-17 : COOLING SYSTEM



NO.	PART CODE	DESCRIPTION	QTY	REMARK	NO.	PART CODE	DESCRIPTION	QTY	REMARK
	2.27.0117.11040	Radiator	1	银色	13	2.23.0117.00400	thermostat in pipe \$17.5*25*83L	1	
2	2.23.0117.12000	Fan motor switch	1		14	2.23.0117.00210	Hose of waterout-flow from radiator17.5	1	
3	2.24.0117.20030	Fan motor switch	1		15	2.23.0117.01000	Hose clip \$27	6	
4	2.99.22.050120R	Bolt M5*12	2		16	2.27.0117.00500	Auxiliary tank pressure pipe	1	
5	2.99.54.0500000	Washer 5	2		17	1.72.00.0000400	kettle	4	
6	2.23.0117.30108	Thermostat sheu	1		18	2.23.0117.00300	Water pipe clip	2	
7	2.23.0117.30208	thermostat cover	1		19	2.24.0117.00400	thermostat in pipe \$17.5*25*55	1	
8	2.23.0117.30300	O-ring 20*2.5	1		20	2.23.0117.41000	Radiator cap	1	
9	2.20.0110.0010S	Bolt M6*22	2		21	2.23.0117.40100	Hull,radiator cap	1	
10	2.23.0117.31000	Thermo sensor	1		22	1.99.52.060000S	Washer 6	2	
11	2.24.0117.00700	Radiator Damping Washer	4		23	1.99.56.0600000	Washer	2	
12	2.24.0117.00600	Radiator Damping washer steel set	4						

END