

# Bobber 350



# CONTENTS

## ENGINE PART

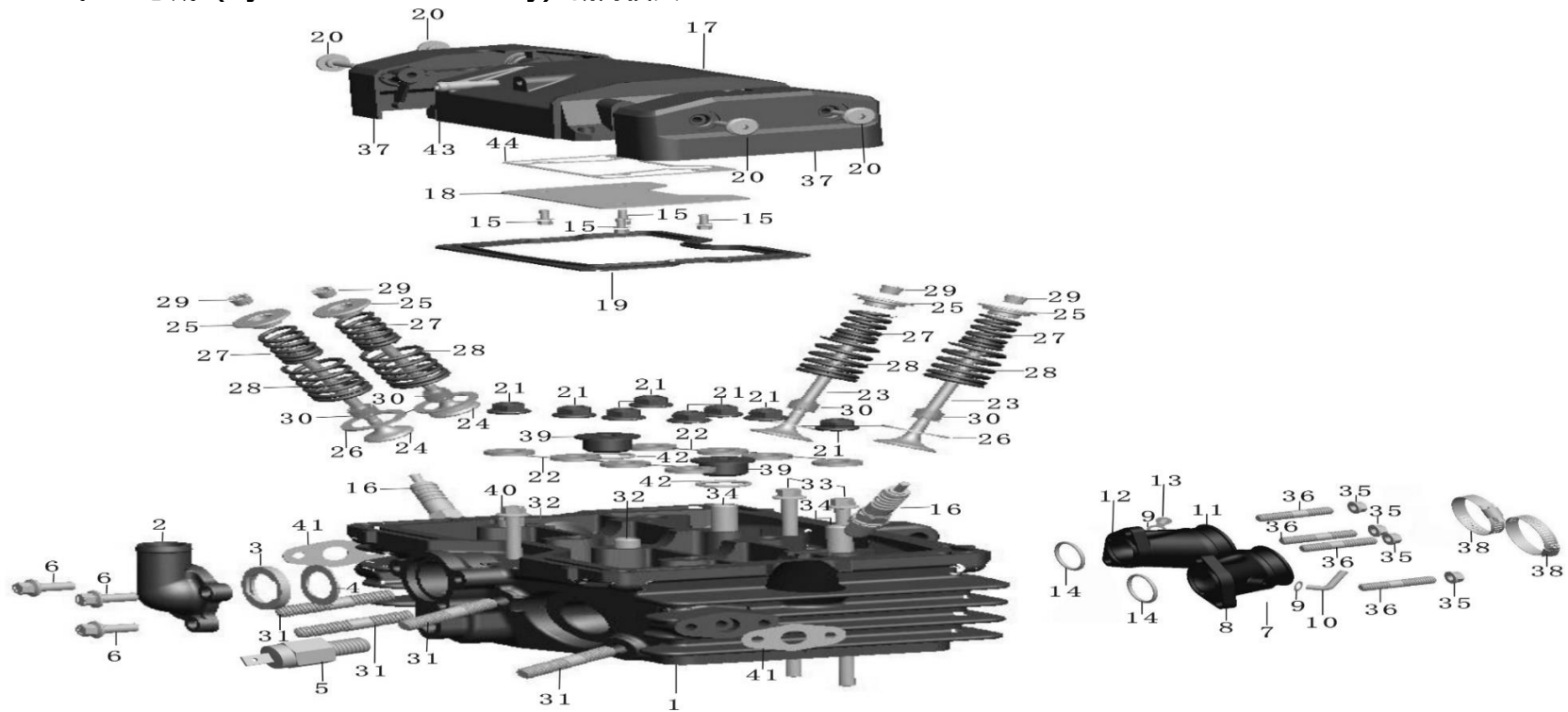
CYLINDER HEAD ASSY	4
CYLINDER ASSY	5
CRANKCASE ASSY	6
CRANKSHAFT CONNECTING ROD PISTON ASSY	7
ALLOT AIR ORGANIZATION ASSY	8
OIL PUMP ASSY	9
CLUTCH ASSY	10
LEFT CRANKCASE COVER ASSY	11
CRABURETOR ASSY	12
ELECTRICITY STARTING ASSY	13
ELECTRICAL SYSTEM	14
RIGHT CRANKCASE COVER ASSY	15
LEFT REAR CRANKCASE COVER ASSY	16
TRANSMISSION ASSY	17
TRANSMISSION ASSY	18
WATER PUMP ASSY	19
WATER PUMP ASSY	20
COOLING SYSTEM	21

## CHASIS PART

CHASIS	22
LIGHTS AND MAIN CABLE	23
BATTERY	24
SWITCH L.R AND GUY CABLE	25
SWITCH L.R AND GUY CABLE	26
FRONT SHAKER FRAME AND SPEEDODOMETER	27
FRONT SUSPENSION AND FRONT FENDER.REAR SHOCK ABSORBER	28
FRONT WHEEL	29
FRONT & REAR BRAKE PUMP ASSY	30
REAR WHEEL	31
FUEL TANK AND FUEL SWITCH	32
SEAT	33
SHIFT GEAR SYSTEM AND SHIFTER	34
REAR BRAKE POLE	35
AIR FILTER ASSY	36
EXHAUST-GAS MUFFLER	37
REAR FENDER	38

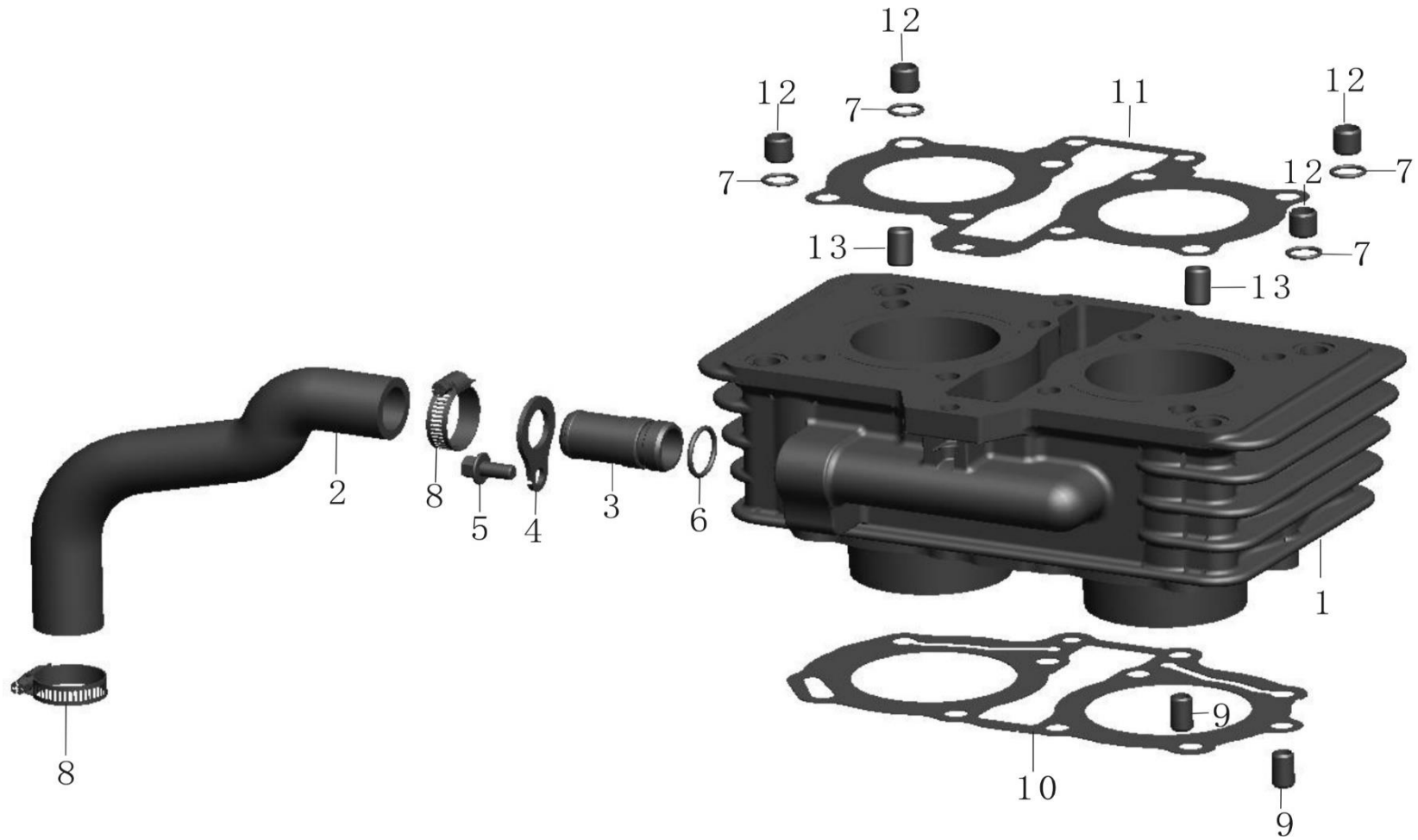
**ENGINE PART**

E-1: 气缸盖总成 (Cylinder head assembly) 新开模具



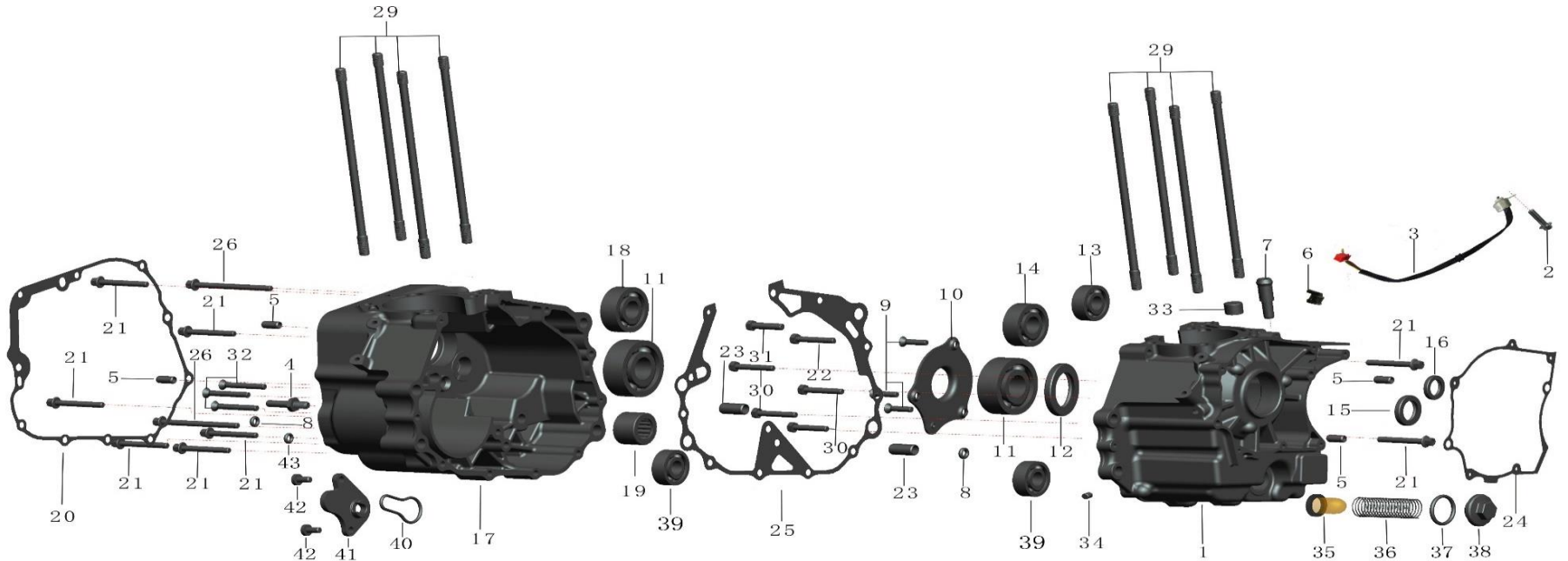
NO	PART CODE	DESCRIPTION	QTY	NO	PART CODE	DESCRIPTION	QTY
1	2.22.0101.10008	Head comp ,cylinder	1	26	2.20.0101.01100	Seat, valve spring outer	4
2	2.22.0101.02508	Hose connector,cyliner,black	1	27	2.20.0101.01200	Spring, valve inner	4
3	2.23.0117.32200	Rusher,thermosat	1	28	2.20.0101.01300	Spring, valve outer	4
4	2.23.0117.32100	Rubber seat,thermosat	1	29	2.20.0101.01400	Cotter, valve	8
5	2.23.0117.31000	Tem sensor	1	30	2.20.0101.02000	Seal, valve stem	4
6	2.20.0108.0040S	Bolt M6 x 20	3	31	2.20.0101.0150R	Bolt stud of escape pipe	4
7	2.22.0101.20000	Left manifold, intake	1	32	2.20.0101.01600	Pin, dowel 10 x 16	2
11	2.22.0101.30000	Right manifold, intake	1	33	2.20.0101.0170R	Bolt M6 x 145	2
14	2.20.0101.20200	O-ring Φ26 x 2.5	2	34	2.20.0101.01900	Pin, dowel 10 x 28	2
15	2.99.26.060120R	Bolt M6 x 12	4	35	2.99.43.060000R	Nut M6-ZnD	4
16	2.30.0101.50020	NGK	2	36	2.20.0101.0220R	Bolt stud M6 x 29	4
17	2.19.0101.00108	Cover, cylinder head	1	37	2.23.0101.0230S	Side cover, cylinder head	2
18	2.19.0101.04200	Coverplate,cyliner cover	1	38	2.20.0101.03000	Band insulator 1 x 44	2
19	2.20.0101.00300	Packing ,head cover	1	39	2.33.0101.10700	Bolt stops	2
20	2.20.0101.0040S	Connect screw of cover	4	40	2.23.0101.0180S	Bolt M6 x 83	1
21	2.20.0101.0050R	Nut, hex M8 x 4	8	41	2.20.0101.61200	Gasket	2
22	2.20.0101.0060R	Washer 8	8	42	2.23.0101.10100	O-ring Φ15.2 x 2.5	2
23	2.22.0101.00700	Valve, in	2	43	2.20.0103.1090R	Rubber pipe cover	1
24	2.22.0101.00800	Valve, ex	2	44	2.19.0101.04110	Gasket,cyliner cover (non asbestos)	1
25	2.20.0101.00900	Retainer, valve spring	4				

**E-2: 气缸体总成 (Cylinder assembly)**



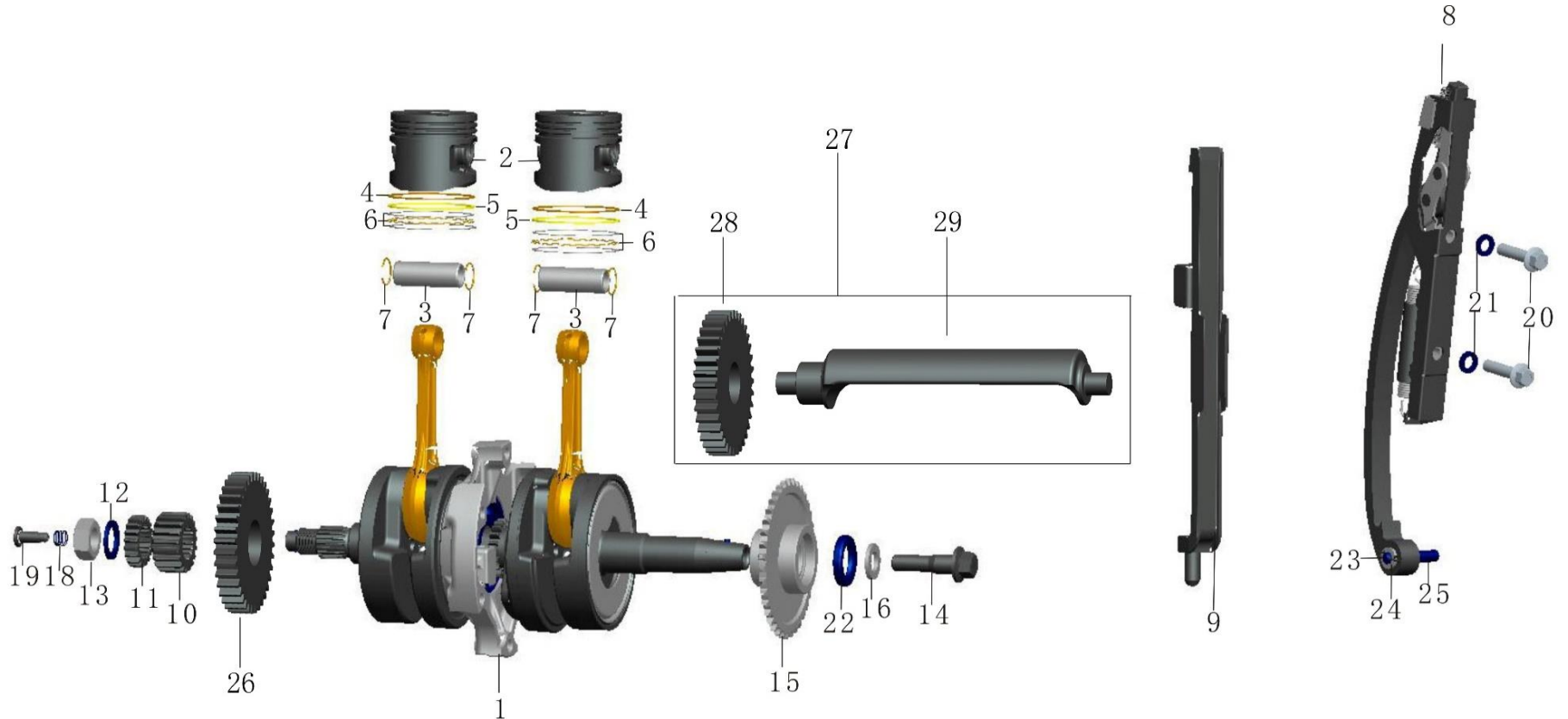
NO	PART CODE	DESCRIPTION	QTY
1	2.22.0102.10008	Cylinder comp	1
2	2.23.0102.00400	Hose, cylinder	1
3	2.23.0101.0250S	Hose connector	1
4	2.23.0101.0240S	Hose connector setting plate	1
5	2.99.26.060120S	Bolt M6 x 12	1
6	2.23.0101.02600	O-ring $\Phi 17 \times 2$	1
7	2.20.0101.10300	O- ring $\Phi 10 \times 1.6$	4
8	2.23.0117.01000	Hose clip	2
9	2.20.0102.00100	Pin,dowel $\Phi 8 \times 14$	2
10	2.22.0102.00200	Gasket,cylinder	1
11	2.22.0102.00300	Gasket,cylinder head	1
12	2.23.0102.00600	Pin,dowel 10 x 10	4
13	2.20.0101.01600	Pin,dowel $\Phi 10 \times 16$	2

E-3: 曲轴箱总成 (Crankcase assembly) -带档显



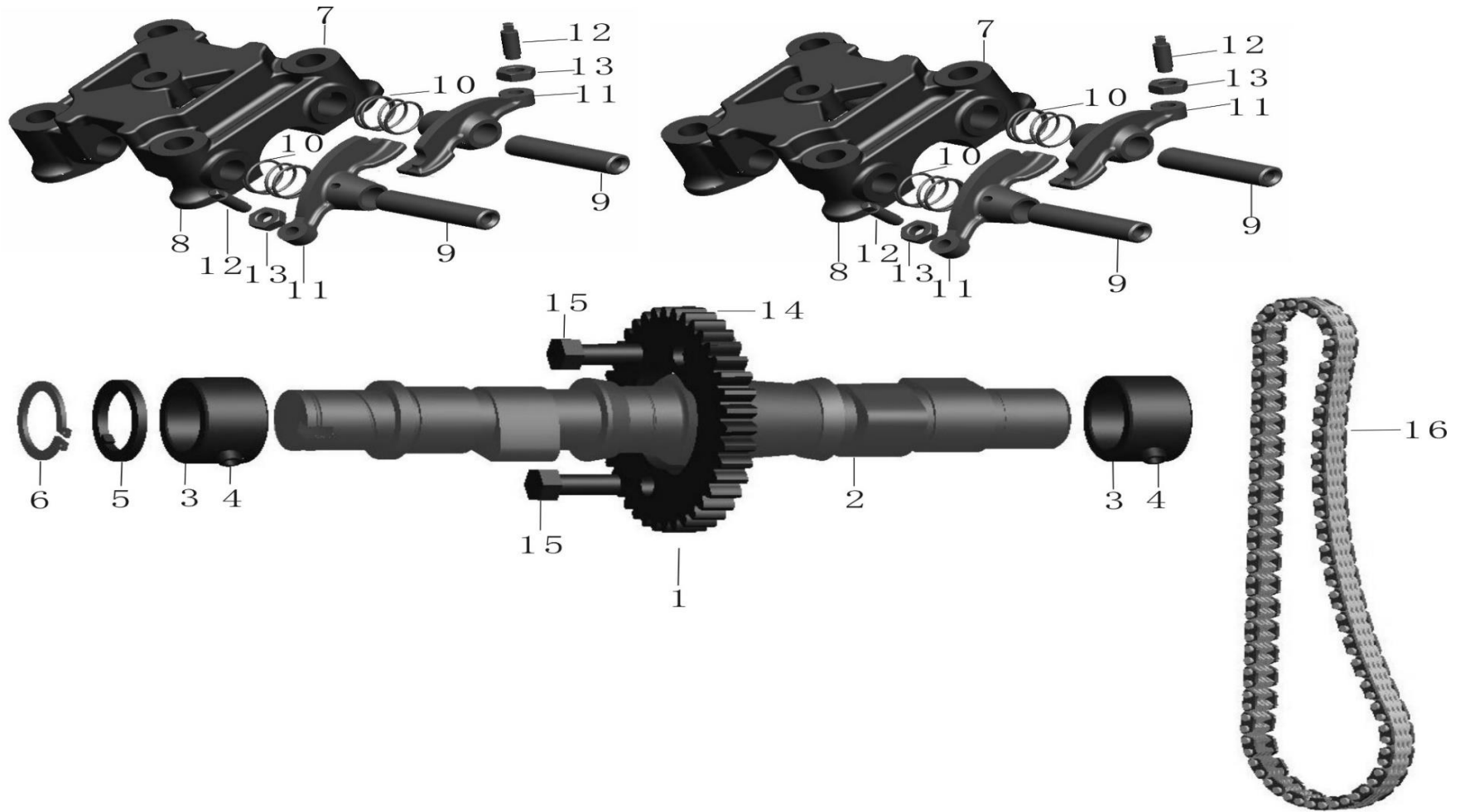
NO	PART CODE	DESCRIPTION	QTY	NO	PART CODE	DESCRIPTION	QTY
1	2.22.0103.19003	Left crankcase	1	23	2.20.0103.00500	Pin,dowel 12 x 20	2
2	2.99.26.060120R	Bolt M6 x 12	1	24	2.20.0103.00610	Gasket,side spacer	1
3	2.20.0103.17000	Transmishion intericator	1	25	2.22.0103.00720	Gasket,crankcase	1
4	2.20.0103.02200	Pin,shift	1	26	2.20.0108.0060S	Bolt M6 x 65	2
5	2.20.0102.00100	Pin,dowel 8 x 14	4	27	2.20.0103.0110R	Screw M12 x 1.5	1
6	2.20.0103.10700	Jacket, outlet	1	28	2.20.0103.01200	Washer 12	1
7	2.20.0103.1090R	Rubber pipe cover	1	29	2.20.0103.01500	Bolt, cylinder head stud	8
8	2.20.0103.11100	O-ring 6 x 3	2	30	2.20.0103.0160R	Bolt M8 x 1 x 35	4
9	2.99.05.060160R	Screw M6 x 16	3	31	2.22.0103.02300	Bolt M7 x 1 x 19	1
10	2.20.0103.12000	Plate, oil through	1	32	2.99.05.060320R	Screw M6x32-ZnD	3
11	2.99.70.0630500	Bearing 6305/P6	2	33	2.20.0103.10100	Sleeve	1
12	2.20.0103.13000	Oil seal 35 x 52 x 7	1	34	2.20.0103.10200	Sleeve	1
13	2.99.70.0620200	Bearing 6202-Z/P6	1	35	2.52.0103.09200	Screen ,oil filter	1
14	2.20.0103.14000	Bearing 22 x 47 x 14-RS/P6	1	36	2.19.0112.00400	Spring,oil filter	1
15	2.20.0103.15000	Oil seal 22 x 34 x 7	1	37	2.90.0101.01800	O-ring 30.8 x 3.2	1
16	2.20.0103.16000	Oil seal 11.6 x 24 x 10	1	38	2.90.0100.08300	Valve cover	1
17	2.22.0103.21003	Right crankcase	1	39	2.99.70.0630110	Bearing 6301/P5	2
18	2.99.70.0630400	Roller bearing 6304/P6	1	40	2.22.0106.02600	Seal ring,oil pump	1
19	2.20.0103.22000	Needle-bearing NK152312	1	41	2.22.0103.02400	Pressing plate, oil pump	1
20	2.22.0103.00100	Gasket,right crankcase cover	1	42	2.99.04.050080R	Screw M5 x 8	2
21	2.20.0112.0010S	Bolt M6 x 40	8	43	2.22.0103.02500	O-ring 8 x 3	1
22	2.20.0103.0210R	Bolt M8 x 1 x 30	1				

### E-4: 曲轴连杆总成 (Crankshaft connecting rod piston assembly)



NO	PART CODE	DESCRIPTION	QTY	NO	PART CODE	DESCRIPTION	QTY
1	2.22.0104.10020	Crankshaft comp	1	13	2.20.0104.0050R	Nut, hex M16 x 1	1
2	2.22.0104.20100	Piston	2	14	2.20.0104.0060R	Bolt, rotor setting	1
3	2.22.0104.20200	Pin, piston	2	15	2.20.0104.00700	Sprocket comp, starting	1
4	2.22.0104.20300	1st piston ring	2	16	2.20.0104.00800	Washer 12	1
5	2.22.0104.20400	2nd piston ring	2	17	2.20.0104.00900	Pin Φ2 x 14	1
6	2.22.0104.21000	Oil seal set	2	18	2.20.0104.01100	Spring, oil through	1
	2.22.0104.21100	Expander ring	2	19	2.20.0104.01200	Through oil	1
	2.22.0104.21200	Scaper	4	20	2.20.0104.0130R	Bolt M6 x 26	2
7	2.20.0104.20500	Clip, piston pin	4	21	2.20.0104.01400	Washer 6	2
8	2.20.0104.30020	Chain stretching comp	1	22	2.20.0104.02000	Oil seal 22 x 31 x 5	1
9	2.20.0104.00110	Guide, cam chain	1	23	2.20.0104.01500	Washer	1
10	2.20.0104.00200	Gear, primary drive	1	24	2.20.0104.01600	Flexible spring	1
11	2.23.0104.00300	Gear, oil pump drive	1	25		Pin B6 x 14	1
12	2.20.0104.00400	Washer, lock	1	27	2.22.0104.40000	Balance shaft assy	1

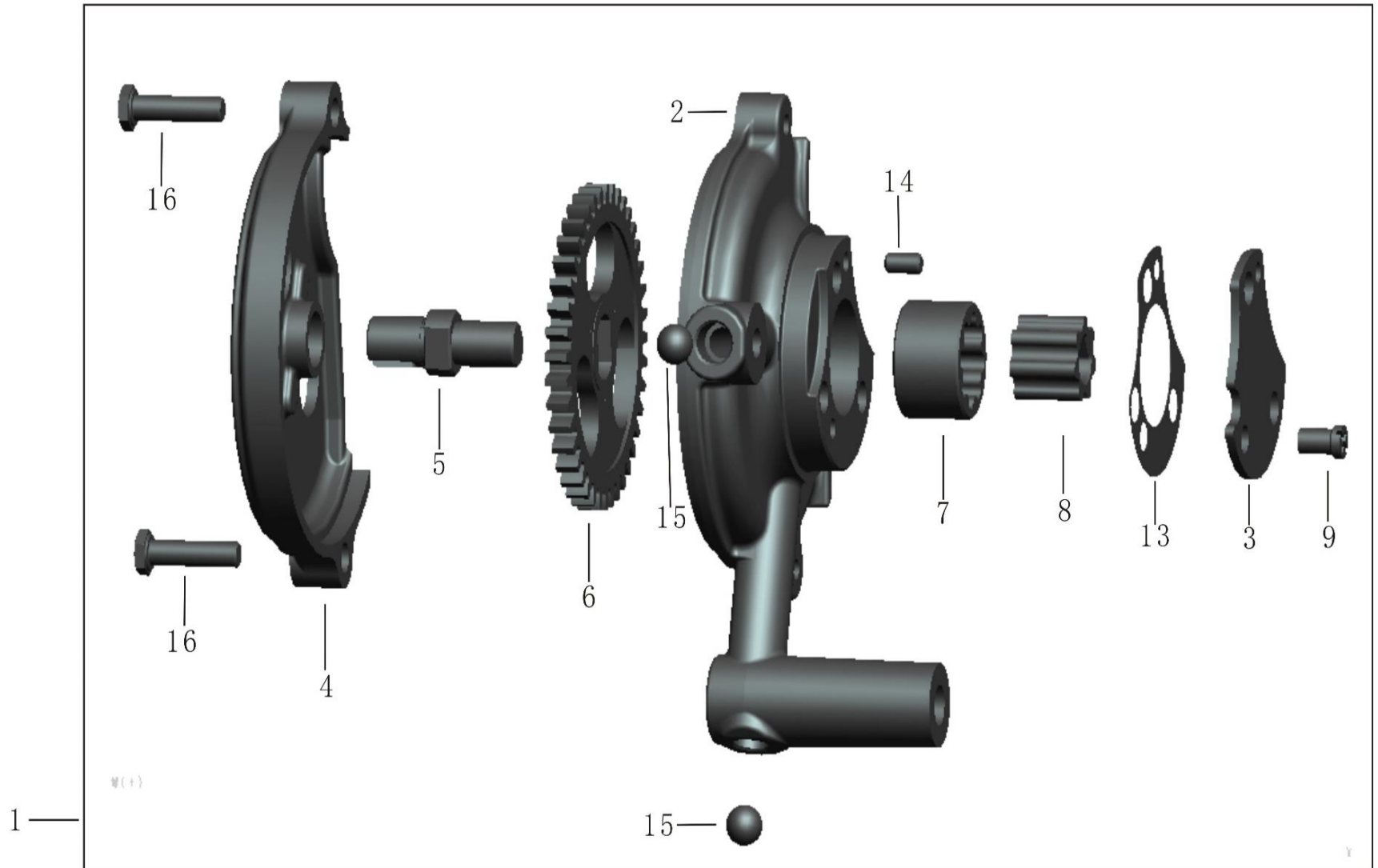
**E-5: 配气机构总成 (Allot air organization assembly)**



NO	PART CODE	DESCRIPTION	QTY	
1	2.20.0105.10000	Camshaft	1	
2	2.20.0105.10000	Camshaft	1	
3	2.20.0105.10210	Bush, camshaft	2	
4	2.20.0105.10300	Pin, dowel bush camshaft	2	
5	2.99.63.0200000	Circlip, externa 20	1	
6	2.20.0105.10500	Washer, thrust	1	
7	2.22.0105.20000	Holder comp, camshaft M8	2	
14	2.20.0105.00110	Sprocket, cam	1	
15	2.20.0105.0020C	Bolt M7 x 13	2	
16	2.20.0105.30000	Chain, cam	1	

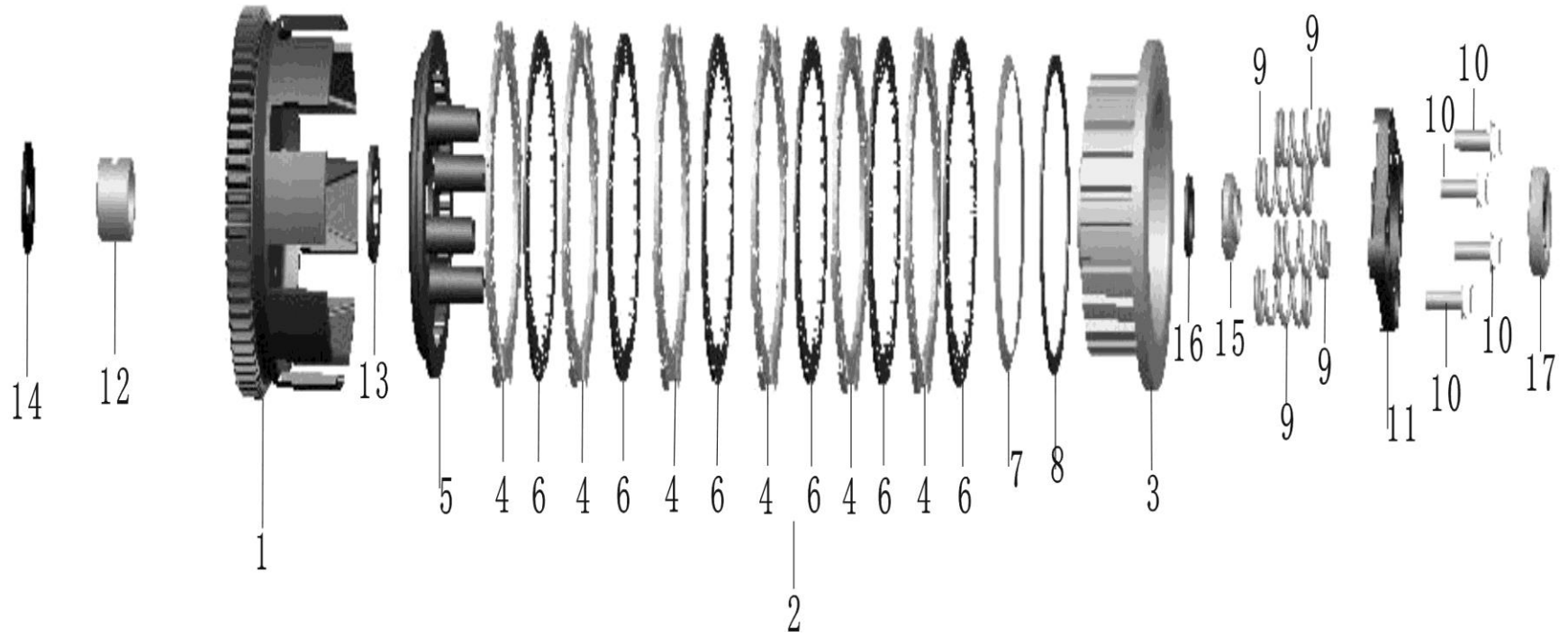


**E-6: 机油泵总成 (Oil pump assembly)**



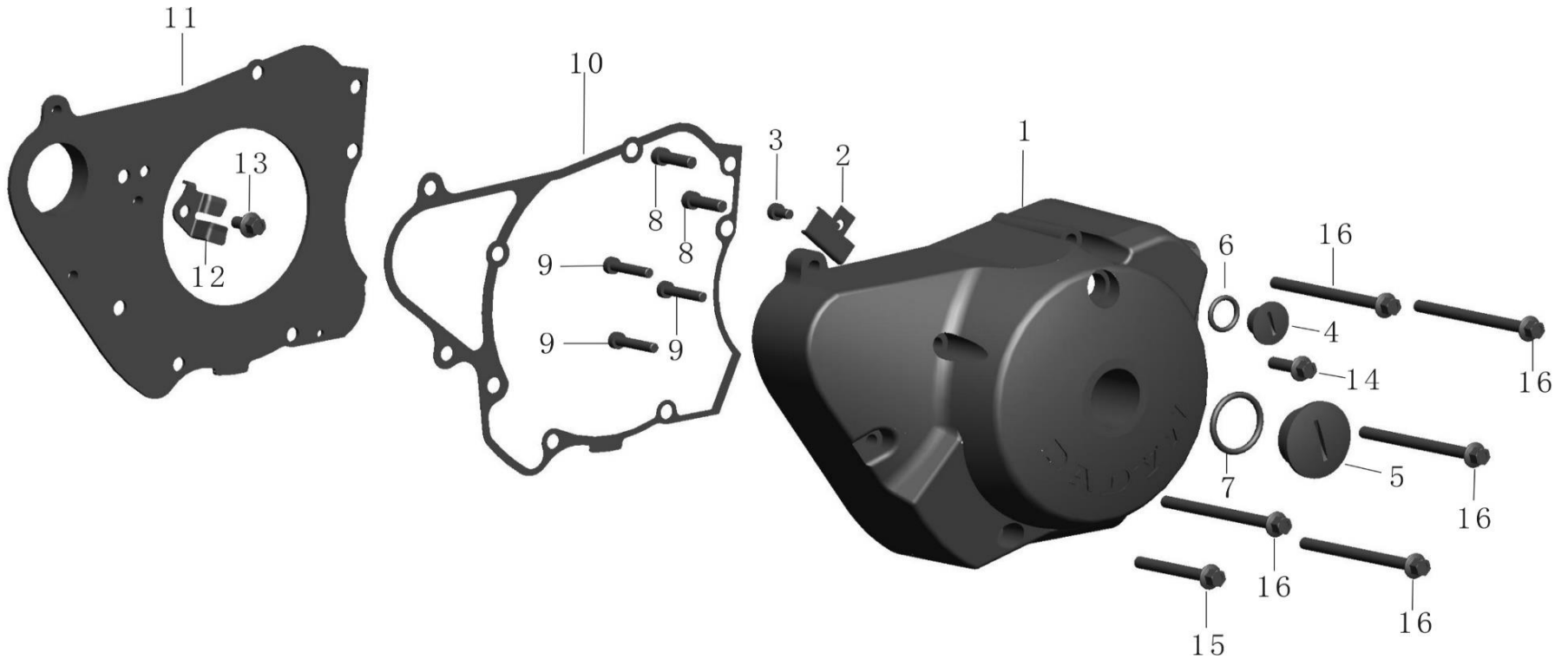
NO	PART CODE	DESCRIPTION	QTY	
1	2.23.0106.00000	Pump assy,oil	1	

**E-7: 离合器总成 (Clutch assembly)**



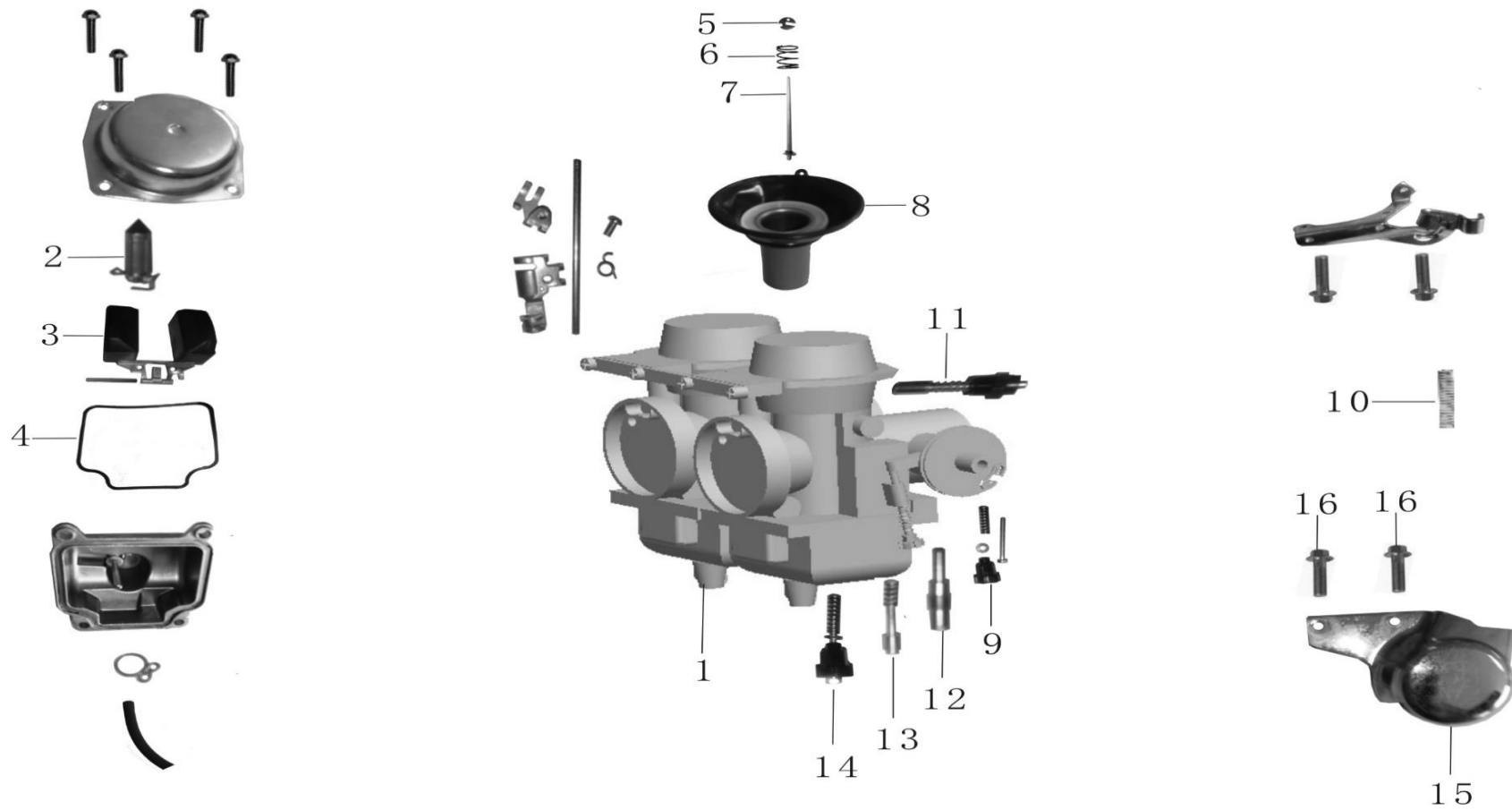
NO	PART CODE	DESCRIPTION	QTY	
1	2.20.0107.11000	Outer comp, clutch	1	
2	2.20.0107.12000	Center frame comp	1	
4	2.20.0107.12210	Disk, clutch friction	6	
6	2.20.0107.12400	Plate, clutch	7	
14	2.20.0107.00100	Washer	1	
15	2.20.0107.00200	Circular nut	1	
16	2.20.0107.00300	Washer, thrust	1	
17	2.20.0107.20000	Pushing bearing	1	

**E-8: 左曲轴箱盖总成 (Left crankcase cover assembly)**



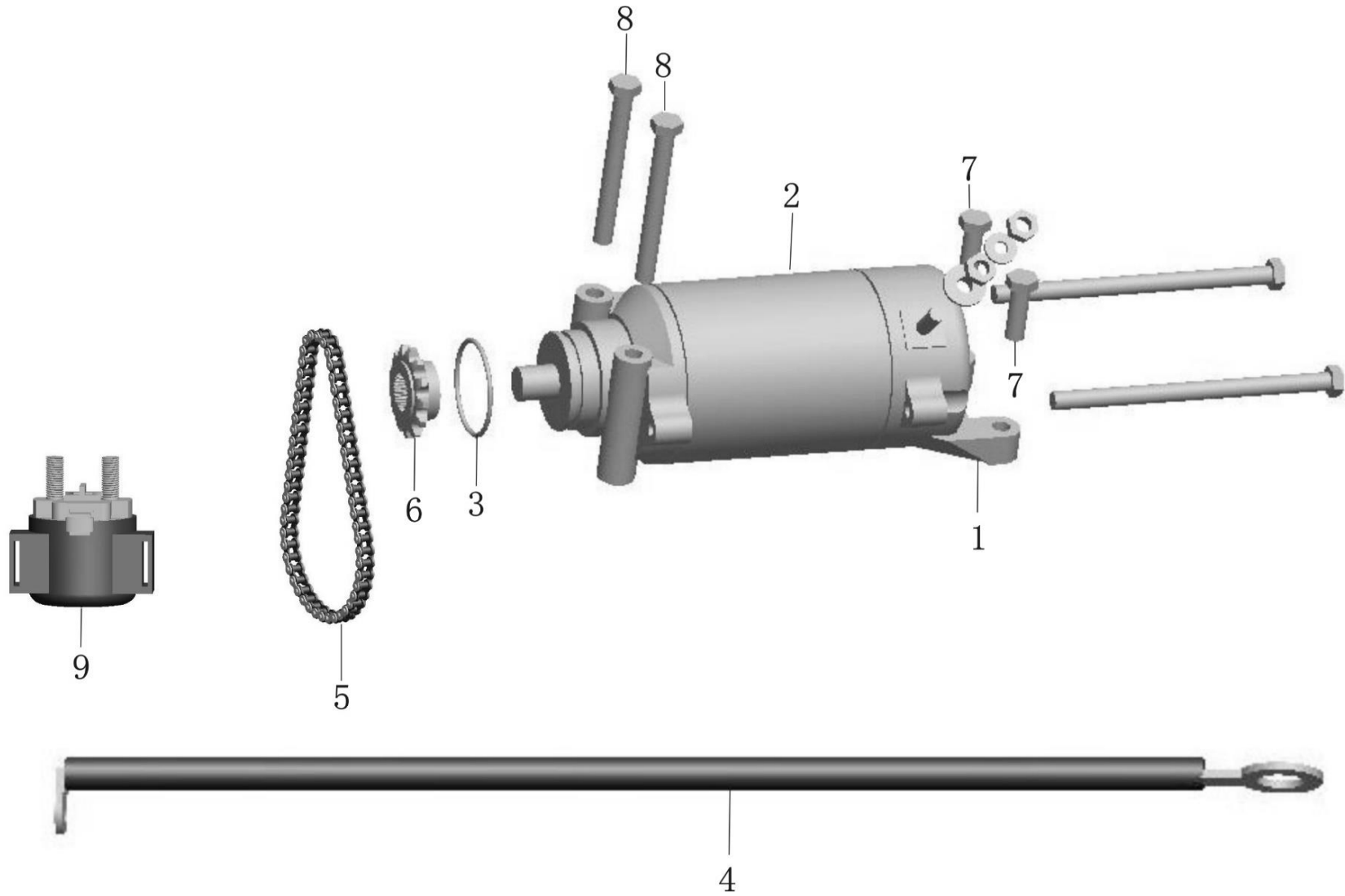
NO	PART CODE	DESCRIPTION	QTY
1	2.20.0108.10108	Cover, left crankcase	1
2	2.20.0108.1020R	Tension Disc	1
3	2.99.03.050080R	Screw, hex M5 x 30-ZnD	1
4	2.20.0108.1030S	Screw M14 x 1.5	1
5	2.20.0108.1040S	Screw M30 x 1.5	1
6	2.20.0108.10500	O-ring 13.8 x 25	1
7	2.20.0108.10600	O-ring 25.8 x 3.1	1
8	2.99.03.060200R	Screw, hex M6 x 20-ZnD	2
9	2.99.03.050250R	Screw, hex M5 x 30-ZnD	3
10	2.20.0108.00110	Gasket, left crankcase cover	1
11	2.20.0108.0020R	Spacer comp, left side	1
12	2.20.0108.00300	Plate, starting sprocket setting	1
13	2.99.26.060100R	Bolt M6 x 10-ZnD	1
14	2.20.0108.0040S	Bolt M6 x 20	1
15	2.20.0112.0020S	Bolt M6 x 50	1
16	2.20.0108.0060S	Bolt M6 x 65	5

E-9: 化油器总成 (双腔) (Carburetor assembly)



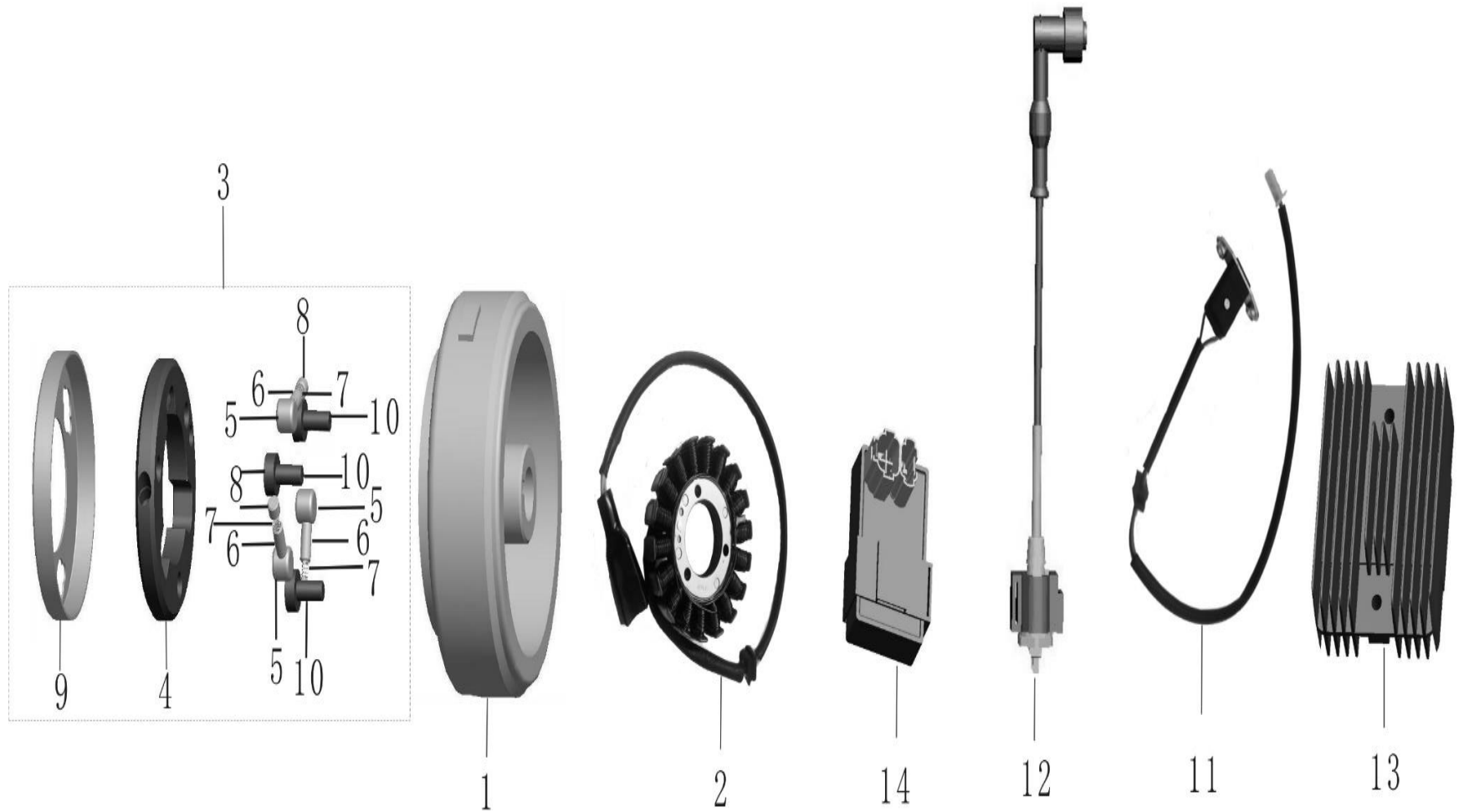
NO	PART CODE	DESCRIPTION	QTY	
1	2.20.0109.10010	Carburetor, assy	1	
15	2.20.0109.0010S	Decorative cover, carburetor	1	

**E-10: 电启动总成 (Electricity starting assembly)**



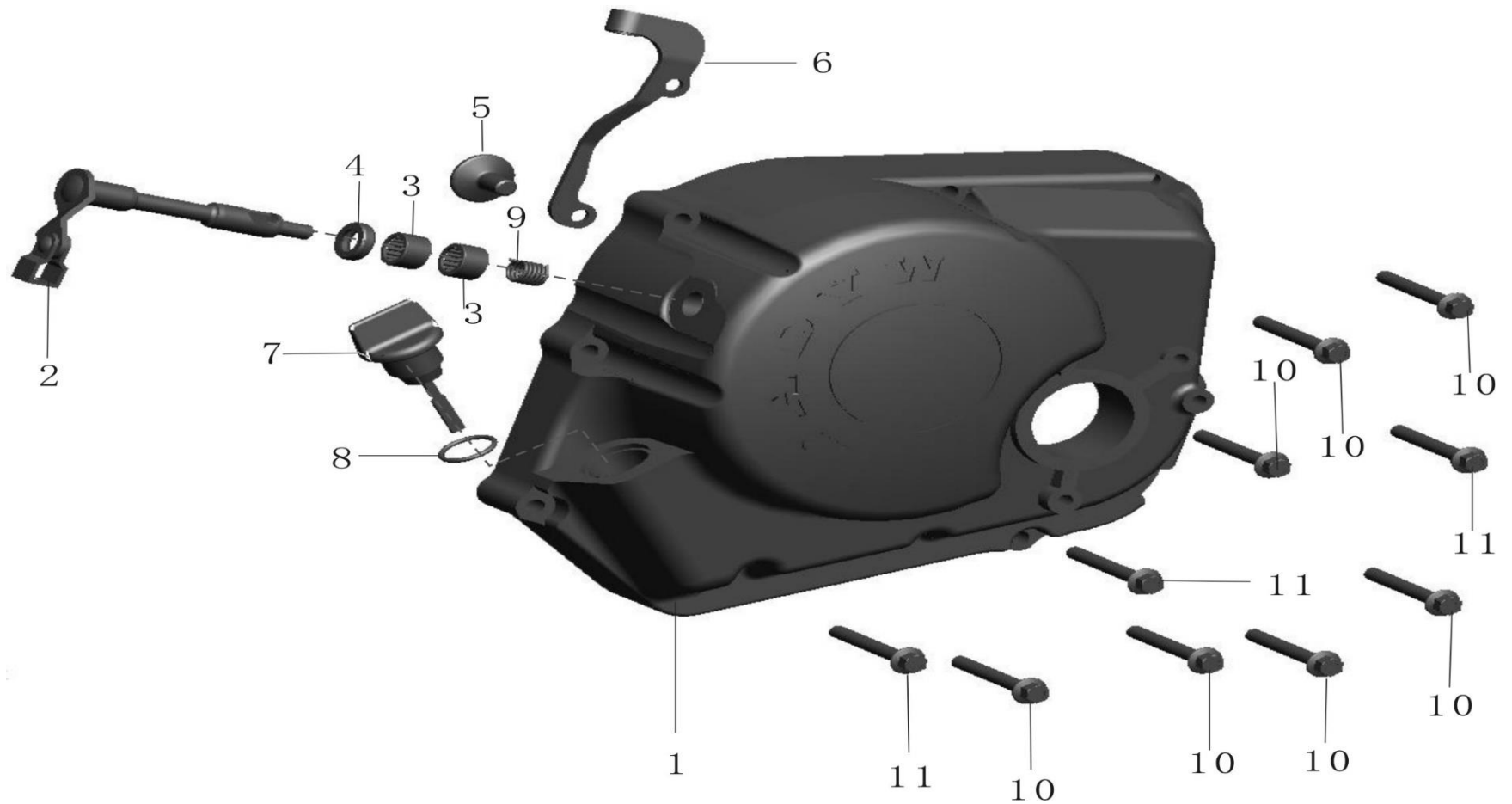
NO	PART CODE	DESCRIPTION	QTY	
1	2.20.0110.10000	Starting motor	1	
4	2.20.0110.11000	Connecting cable, starting motc	1	
5	2.20.0110.30000	Chain, starting	1	
6	2.20.0110.10200	Sprocket, starting motor	1	
7	2.20.0110.0010S	Bolt M6 x 22	2	
8	2.20.0108.0060S	Bolt M6 x 65	2	
9	2.20.011020000	Starting relay	1	

**E-11: 电器系统分总成 (Electrical system)**



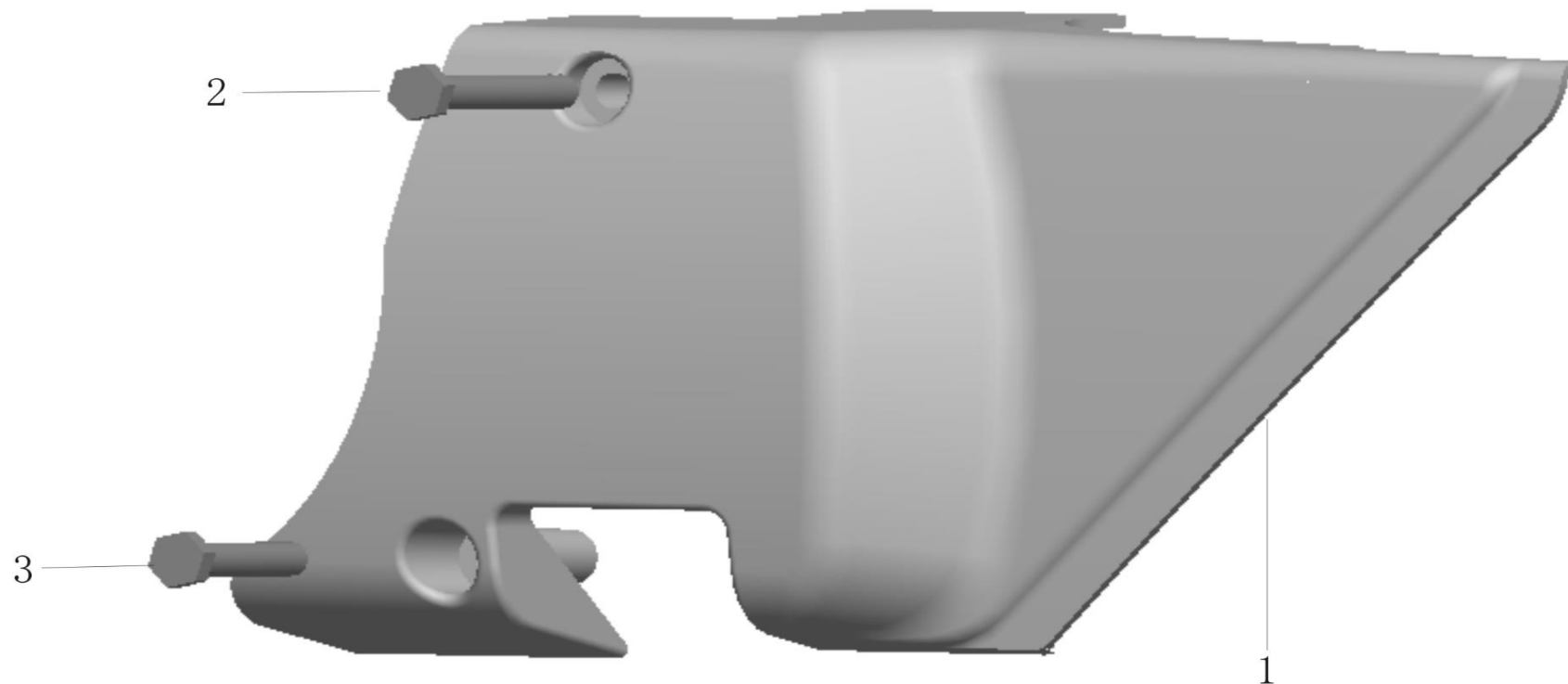
NO	PART CODE	DESCRIPTION	QTY
1	2.23.0111.11000	Flywheel comp	1
2	2.23.0111.12000	Stator comp	1
3	2.22.0111.13000	Starting clutch	1
10	2.20.0111.13700	Screw M8 x 16-ZnD	3
11	2.23.0111.15000	Sensor set	1
12	2.20.0111.30010	Ignition coil	1
13	2.23.0111.40000	Rectifier regulator	1
14	2.23.0111.50000	Igniter	1

**E-12: 右曲轴箱盖总成 (Right crankcase cover assembly)**



NO	PART CODE	DESCRIPTION	QTY
1	2.23.0112.1010S	Cover comp,right crankcase	1
2	2.20.0112.1100S	Lever comp,clutch	1
3	2.20.0112.12000	Bearing HK1210	2
4	2.20.0112.13000	Oil seal 12 x 18 x 5	1
5	2.20.0112.10200	Pin,clutch lifter	1
6	2.20.0112.1030S	Receiver,clutch cable	1
7	2.20.0112.14000	Gauge,oil level	1
8	2.20.0112.14200	O- ring Φ18 x 3	1
9	2.20.0112.10600	Spring S	1
10	2.20.0112.0010S	Bolt M6 x 40	7
11	2.20.0112.0020S	Bolt M6 x 50	3

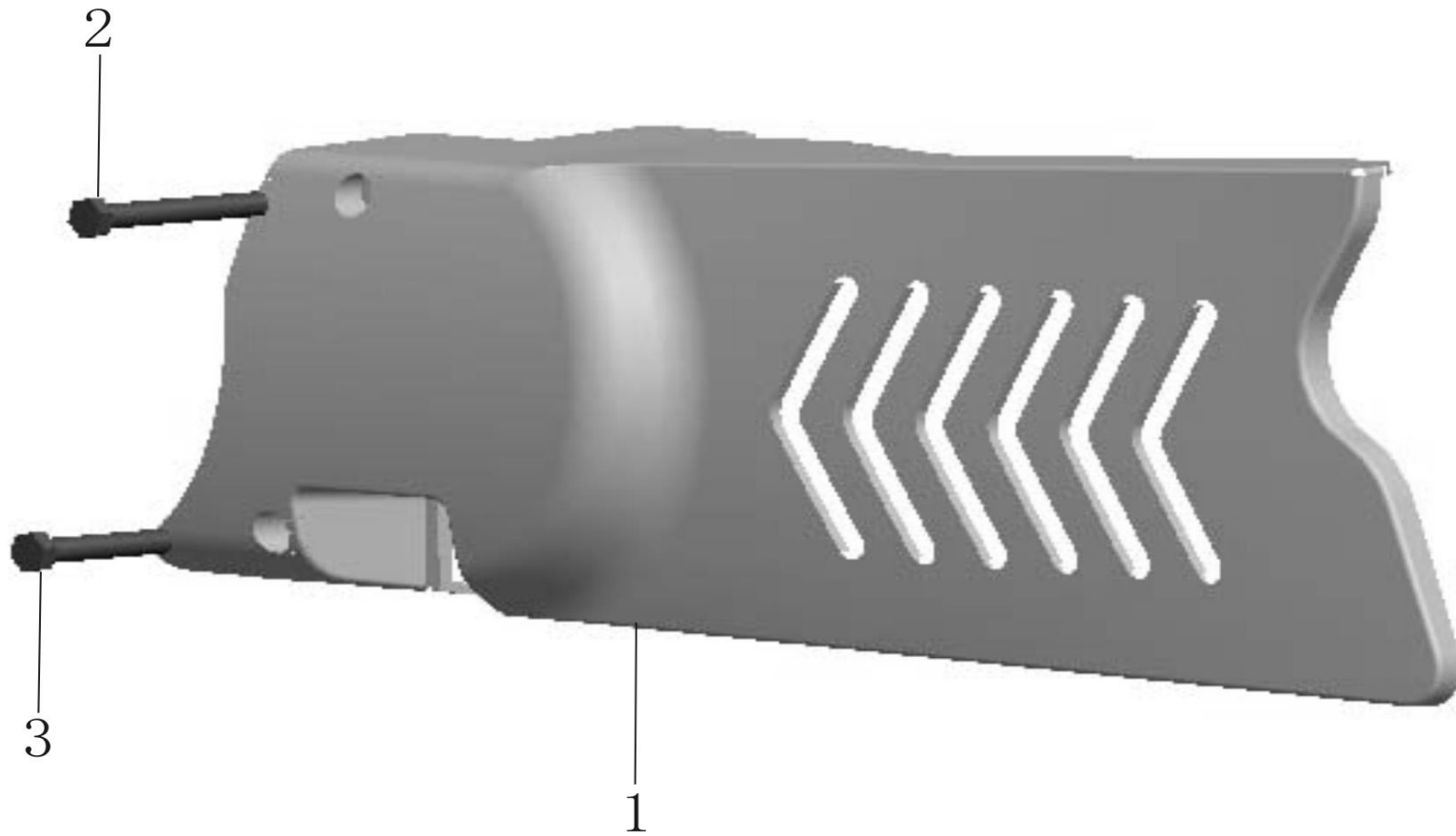
E-13: 左曲轴箱后盖总成 (Left rear crankcase cover assembly)



NO	PART CODE	DESCRIPTION	QTY	
1	2.20.0113.1000S	Left rear crankcase	1	
2	2.20.0113.0010S	Bolt M6 x 46	1	
3	2.20.0113.0020S	Bolt M6 x 60	1	

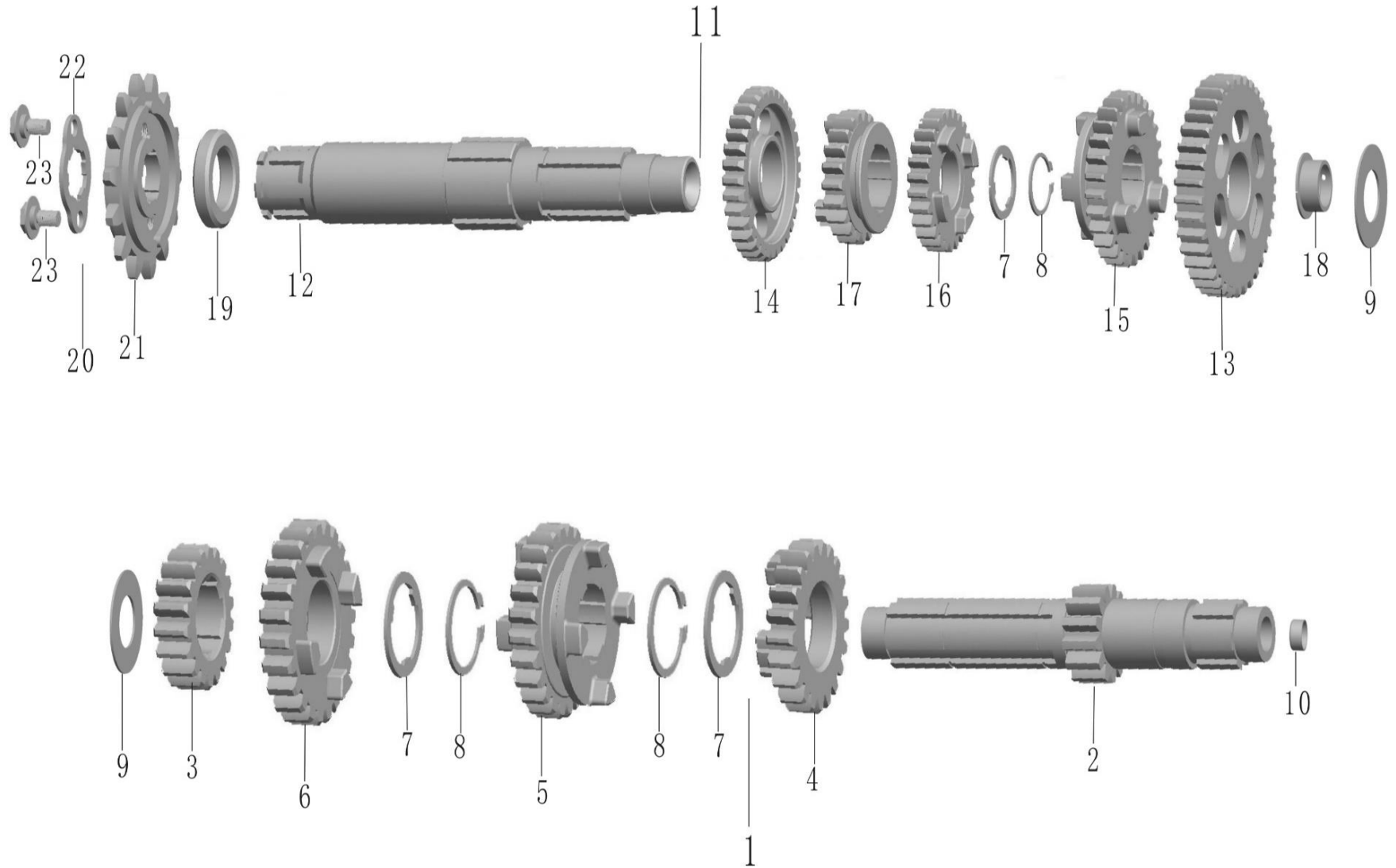


E-13: 左曲轴箱后盖总成 (Left rear crankcase cover assembly) 跑车



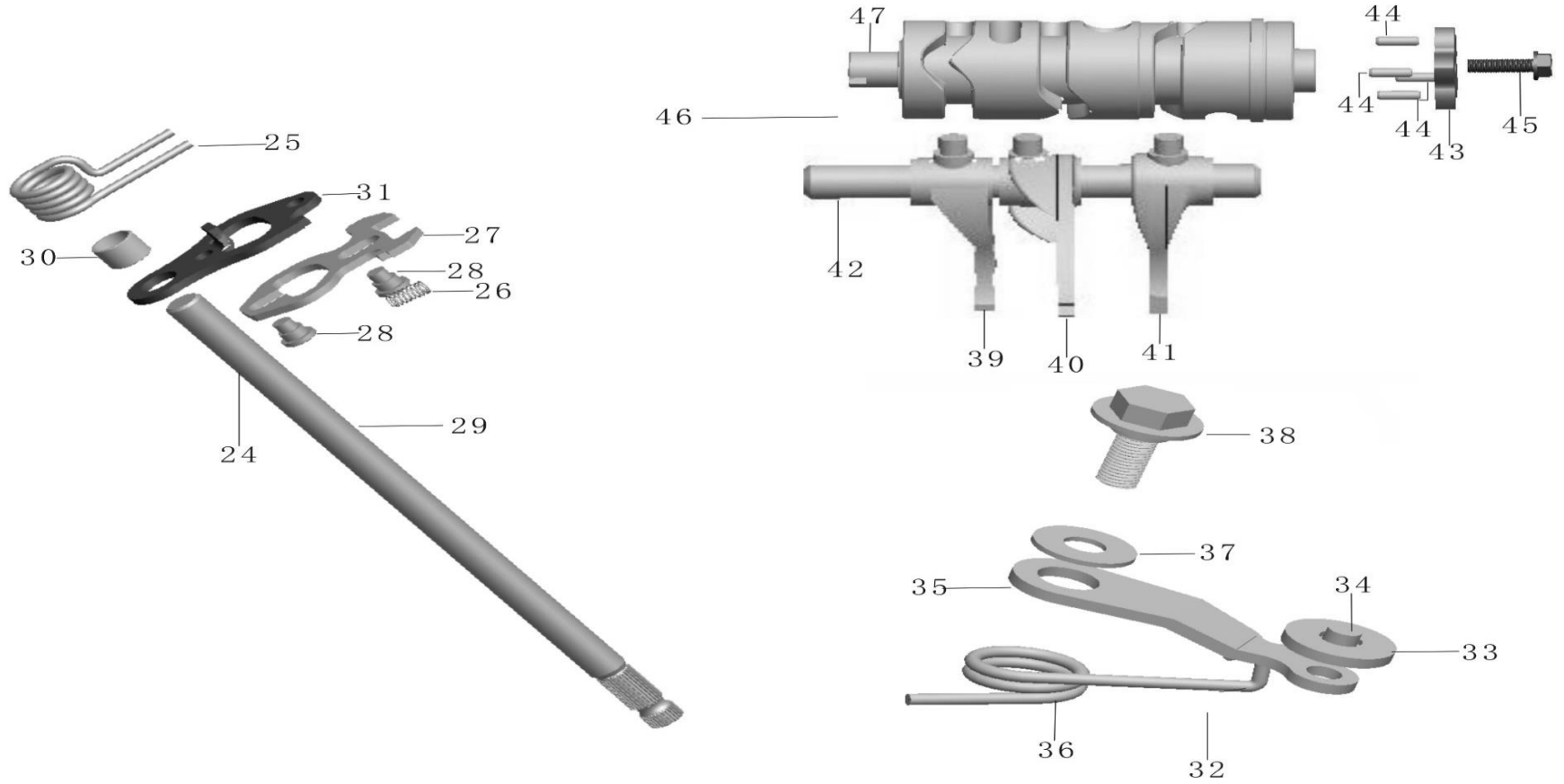
NO	PART CODE	DESCRIPTION	QTY	
1	2.26.0113.1000S	Left rear crankcase	1	
2	2.20.0113.0010S	Bolt M6 x 46	1	
3	2.20.0113.0020S	Bolt M6 x 60	1	

**E-14: 变速器总成 (Transmission assembly)**



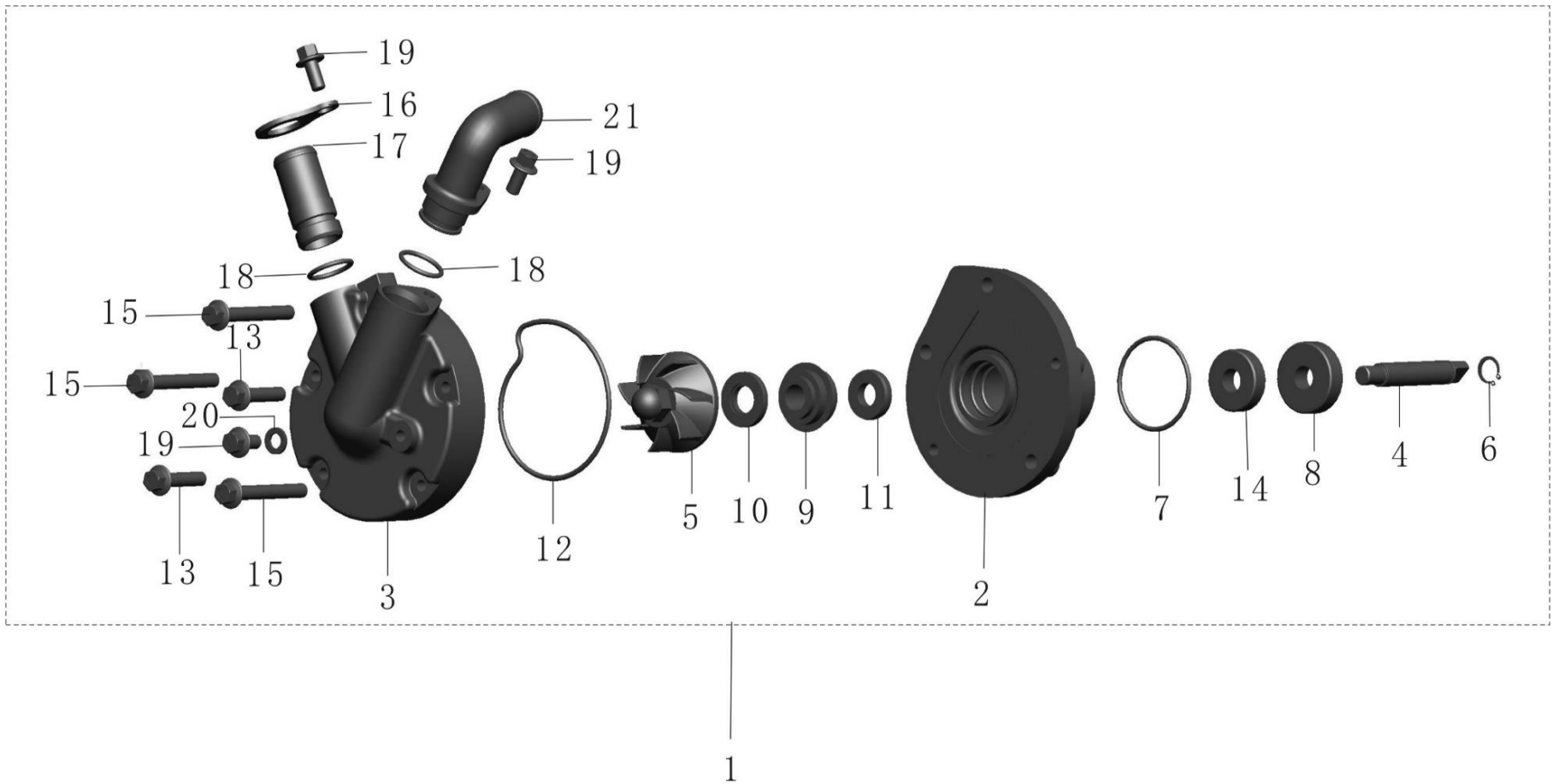
NO	PART CODE	DESCRIPTION	QTY	
1	2.20.0114.10000	Main shaft	1	
11	2.20.0114.20020	Countershaft	1	
12	2.20.0114.20030	Countershaft comp	1	
20	2.20.0114.40110	Counter shaft assy	1	
22	2.20.0114.40200	Plate,fixing	1	
23	2.99.24.060100R	Bolt M6 x 10/ZnD	2	

**E-14: 变速器总成 (Transmission assembly) 档显)**



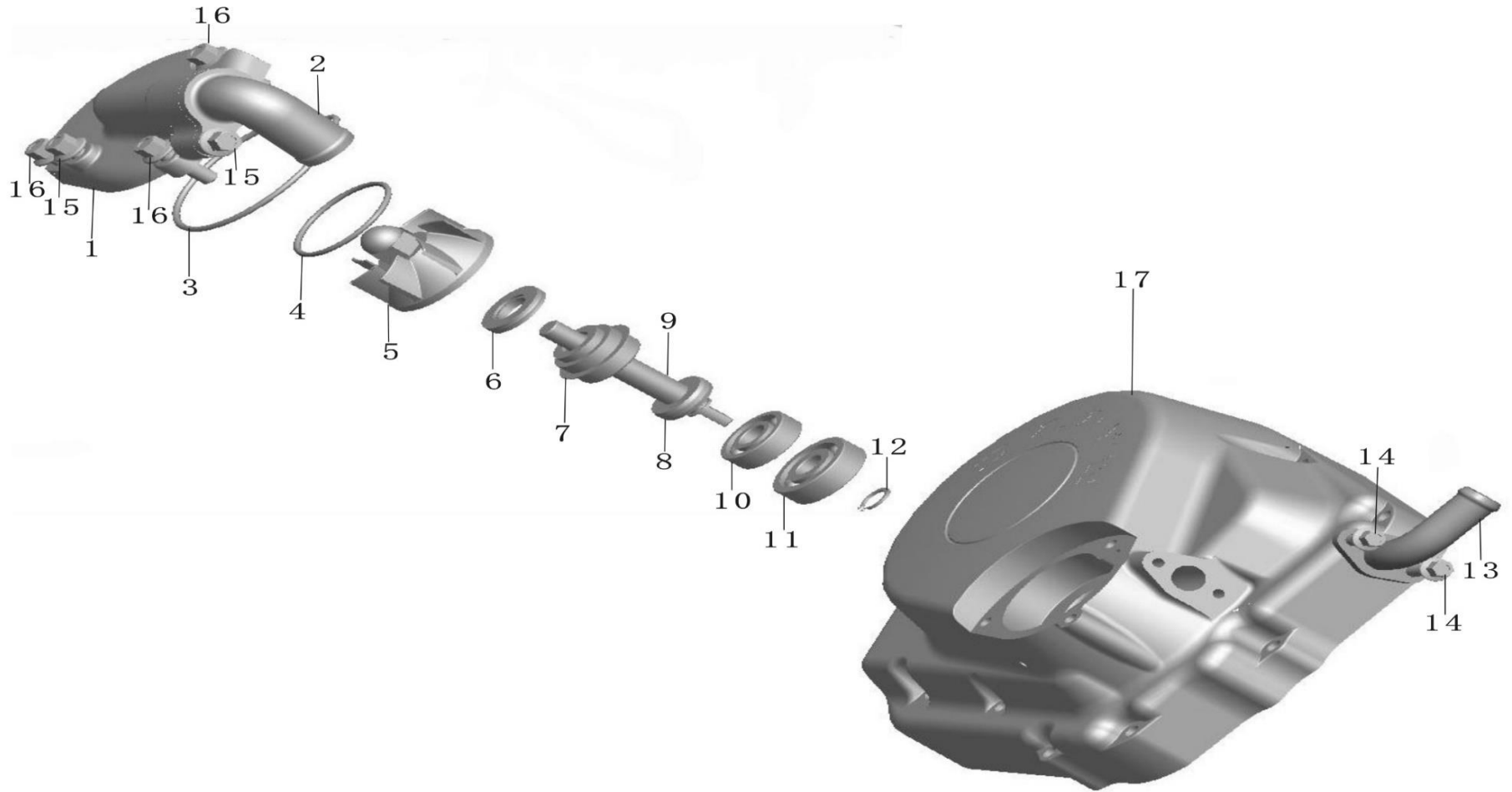
NO	PART CODE	DESCRIPTION	QTY
24	2.25.0114.30000	Spindle comp,gearshift	1
32	2.20.0114.50000	Stopper comp,gearshift drum	1
36	2.20.0114.50100	Spring,shift drum stopper	1
37	2.20.0114.50200	Washer 6	1
38	2.20.0114.5030R	Screw M6 x 12	1
39	2.20.0114.00100	Fork,left gearshift	1
40	2.20.0114.00200	Fork,center gearshift	1
41	2.20.0114.00300	Fork,right gearshift	1
42	2.20.0114.00400	Shaft,gearshift fork guide	1
43	2.20.0114.00500	Plate,drum stopper	1
44	2.20.0114.00600	Pin,gearshift drum	4
45	2.20.0114.0070R	Screw M6 x 20	1
47	2.20.0114.60010	Drum,gearshift	1

E-15: 水泵总成(Water pump assembly)-老模具



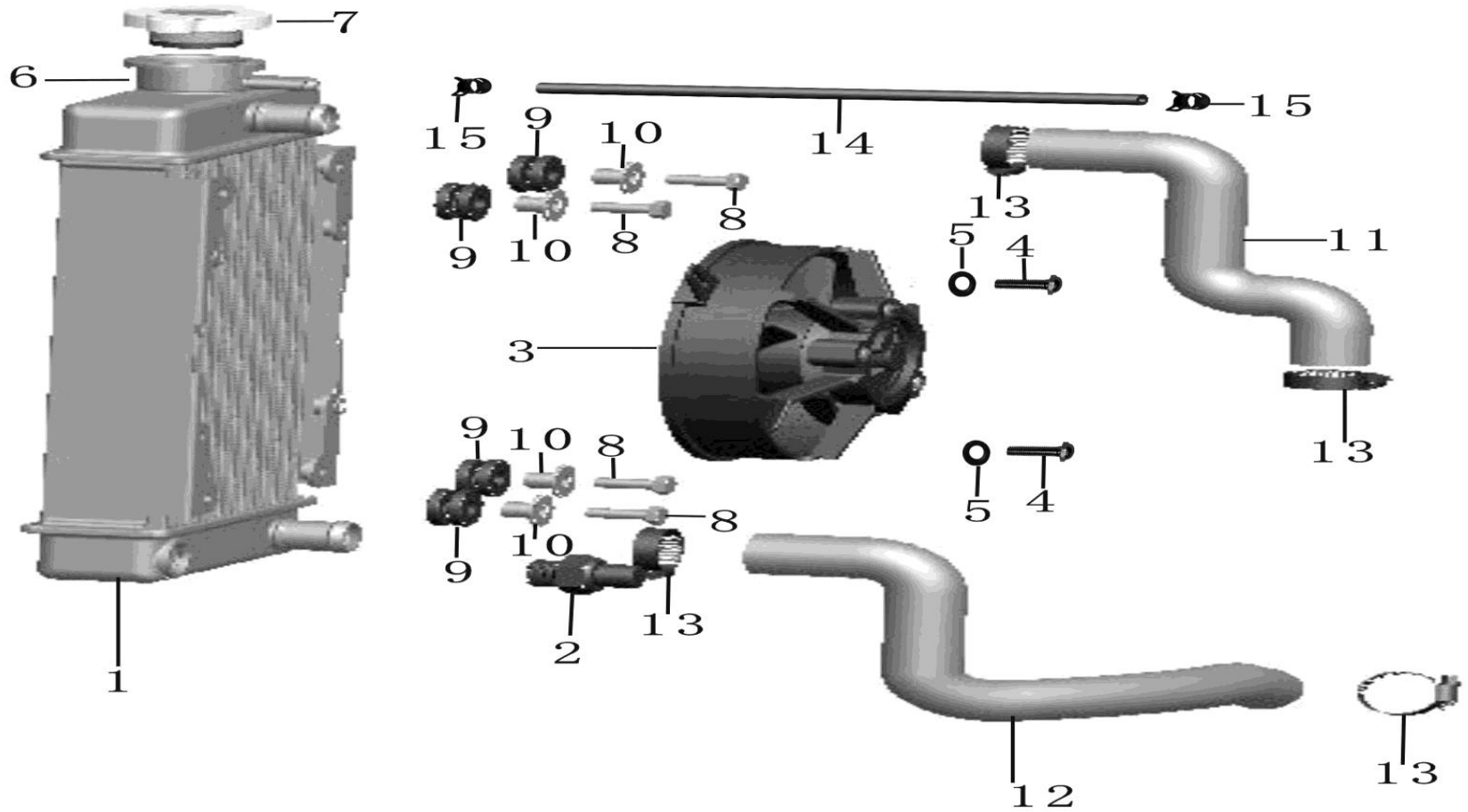
NO	PART CODE	DESCRIPTION	QTY		NO	PART CODE	DESCRIPTION	QTY
1	2.23.0116.00000	Water pump comp	1		12	2.23.0116.00600	O-ring of pump cover	1
2	2.23.0116.0010S	Water pump hull	1		13	2.23.0116.0110S	Bolt M6 x 30	2
3	2.23.0116.0020S	Water pump cover	1		14	2.99.70.0600000	Bearing 6000	1
4	2.23.0116.00300	Water pump shaft	1		15	2.20.0112.0010S	Bolt M6 x 40	3
5	2.23.0116.00402	Fan	1		16	2.23.0101.0240S	Hose connector setting plate	1
6	2.99.63.0800000	Retaining ring 8	1		17	2.23.0101.0250S	Hose connector	1
7	2.23.0116.00500	O-ring φ36 x 2	1		18	2.23.0101.02600	O-ring φ17 x 2	2
8	2.99.70.0620000	Bearing 6200	1		19	2.99.26.060120S	Bolt M6 x 12	3
9	2.23.0116.10000	Water seal A	1		20	2.99.55.0600000	Washer 6	1
10	2.23.0116.20000	Water seal B	1		21	2.23.0116.0120S	Inlet water pump connector	1
11	2.23.0116.30000	Oil seal 21 x 10 x 5	1					

**E-15: 水泵总成(Water pump assembly)-新改模具**



NO	PART CODE	DESCRIPTION	QTY		NO	PART CODE	DESCRIPTION	QTY	
1	2.23.0116.0020S	Water pump cover	1		10	2.99.70.0600000	Bearing 6000	1	
2	2.23.0116.0120S	Inlet water pump connector	1		11	2.99.70.0620000	Bearing 6200	1	
3	2.23.0116.00600	O-ring of pump cover	1		12	2.99.63.0800000	Retaining ring 8	1	
4	2.23.0116.00500	O-ring φ36 x 2	1		13	2.23.0112.1090S	Hose connector	1	
5	2.23.0116.00402	Fan	1		14	2.99.06.060160S	Bolt M6 x 16	2	
6	2.23.0116.20000	Water seal B	1		15	2.99.26.060120S	Bolt M6 x 12	2	
7	2.23.0116.10000	Water seal A	1		16	2.20.0108.0040S	Bolt M6 x 20	3	
8	2.23.0116.30000	Oil seal 21 x 10 x 5	1		17	2.23.0112.10211	Left crankcase cover	1	
9	2.23.0116.00300	Water pump shaft	1						

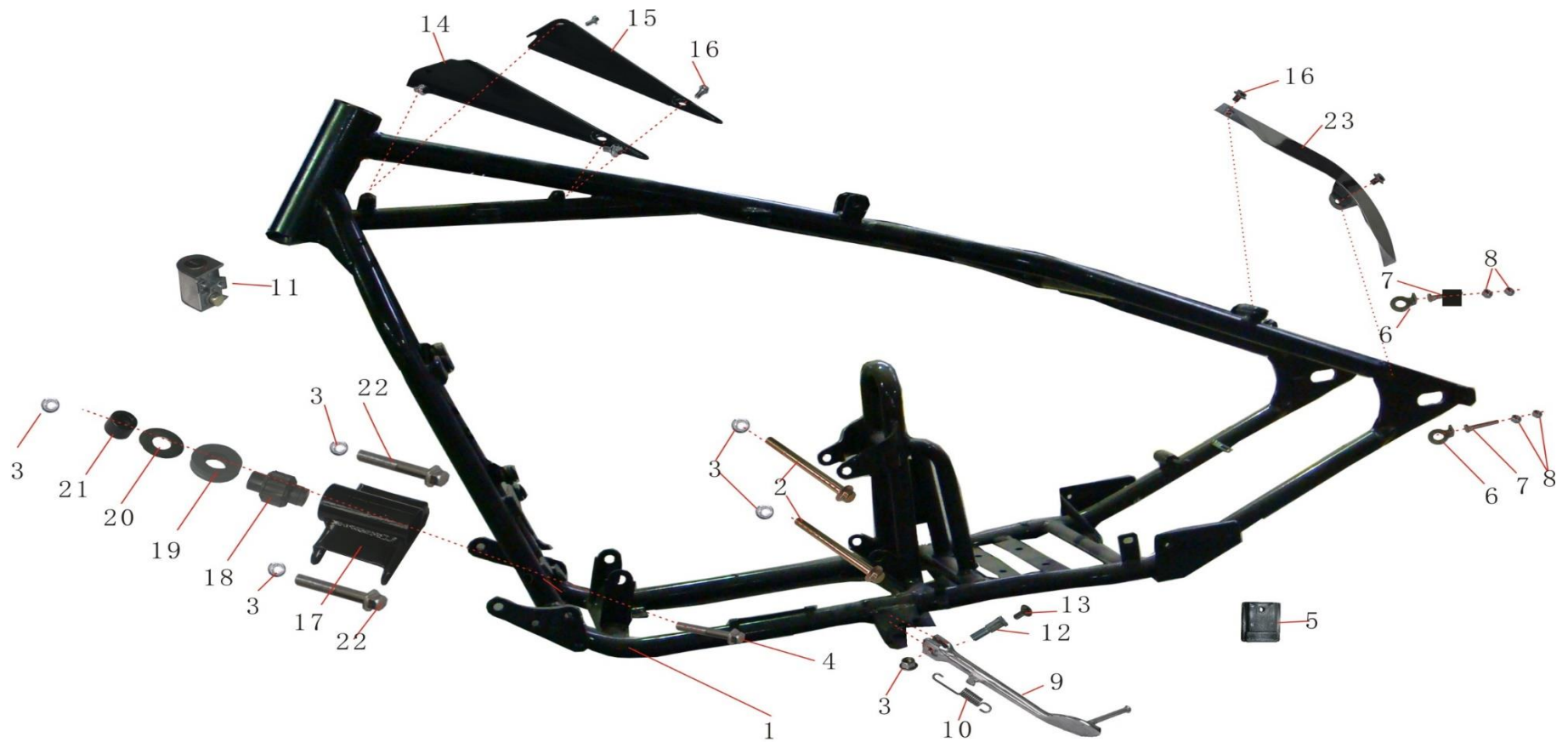
E-16: 冷却系统(Cooling system)与气缸盖新模具匹配



NO	PART CODE	DESCRIPTION	QTY	NO	PART CODE	DESCRIPTION	QTY
1	2.23.0117.11000	Radiator	1	9	2.24.0117.00700	Radiator cushion Washer	4
2	2.23.0117.12000	Fan motor switch	1	10	2.24.0117.00600	Radiator Cushion Washer	4
3	2.23.0117.20000	Fan set	1	11	2.23.0117.00100	Hose of water enter radiator	1
4	2.99.22.050100R	Bolt M5 x 12	2	12	2.23.0117.00200	Hose of water out-flow from	1
5	2.99.54.0500000	Washer 5	2	13	2.23.0117.01000	Tube clip	6
7	2.23.0117.41000	Radiator cap	1	14	2.23.0117.00500	Hose of water enter reservoir	1
8	2.20.0108.0040S	Bolt M6 x 20	4	15	2.23.0117.00300	Hose clip	2

# **CHASSIS PART**

## F-1 车架(Chasis)



NO	PART CODE	DESCRIPTION	QTY	NO	PART CODE	DESCRIPTION	QTY
1	1.30.02.0100010	Chasis	1	13	1.39.14.090000N	Screw M6 x 16	1
2	1.99.26.101120N	Bolt M10 x 112	2	14	1.30.16.0100000	Cable cover. L	1
3	1.99.44.100000R	Self lock nut M10 x 1.25	5	15	1.30.16.0200000	Cable cover. R	6
4	1.99.26.101320N	Bolt M10 x 1.25 x 132	1	16	1.99.27.060120H	Bolt M6 x 12	1
5	1.57.02.0102500	Rubber ring of left rear guard	2	17	1.01.02.050000C	Motor mount (BK)	2
6	1.53.10.0400200	Adjuster block	2	18	1.01.02.0500300	Rubber mount	2
7	1.63.10.0400100	Adjuster screw	4	19	1.01.02.0500200	Oil seal	2
8	1.99.42.0800000	Nut M8 (Stainless)	1	20	1.01.02.0500500	Washer	2
9	1.63.14.0100000	Side stand w/flameout	1	21	1.01.02.050010C	Short sleeve 14.5mm	2
10	1.01.14.0000300	Side stand spring	1	22	1.99.26.100680N	Bolt M10 x 1.25 x 78	2
11	1.63.15.0200000	Bike lock	1	23	1.30.09.0300000	Chain cover	1
12	1.51.14.0000200	Bolt M10 x 1.25 x 35mm	1				



## F-2 灯具及主电缆(Lights and Main cable)



NO	PART CODE	DESCRIPTION	QTY	NO	PART CODE	DESCRIPTION	QTY
1	1.99.03.100300R	Bolt M10 x 30	1	17	1.30.15.0100000	Igniter switch assy	1
2	1.99.56.100000R	Spring washer 10	2	18	1.57.03.0500000	Turn signal R. RR	1
3	1.63.03.0100000	Headlight assy	1	19	1.99.42.1000000	Nut M6	2
4	1.57.03.0100300	Headlight bulb 12V 35W	1	20	1.57.03.0400000	Turn signal L.RR	1
5	1.11.19.000020N	Nut M6	2	21	1.01.03.0900300	Tail light bulb	1
6	1.99.42.0600000	Nut M6	2	22	1.45.03.0600020	Tail light cable	1
7	1.57.03.0400100	Bracket.Front turn signal	1	23	1.02.09.0300400	Rubber spacer	2
8	1.63.03.0200020	Turn signal L.FR	1	24	1.99.43.0600000H	Nut M6	2
9	1.45.03.0400100	Turn signal bulb 12V10W (E)	4	25	1.99.26.1005000	Bolt M10 x 50	1
10	1.63.03.0300020	Turn signal R.FR	1	26	1.57.03.0100200	Bracket, headlight	1
11	1.30.04.0110000	Main cable	1	27	1.99.42.100000N	Nut M10 x 1.5	1
12	1.66.04.1200000	Horn	1	28	1.23.04.0700300	Battery positve wire	1
13	1.01.04.000030H	Bolt M8 x 12	1	29	1.56.32.0901100	Recfictor	1
14	2.51.0111.70030	Doide	1	31	1.A7.32.0300000	ECU	1
15	1.23.04.0200100	Fuse	1	32	1.23.32.0200300	Wire joint	1
16	1.30.04.0210000	Side cable	1	33	2.51.0111.80070	Blink relay 10W	1

### F-3 蓄电池及蓄电池支架(Battery and Battery bracket)



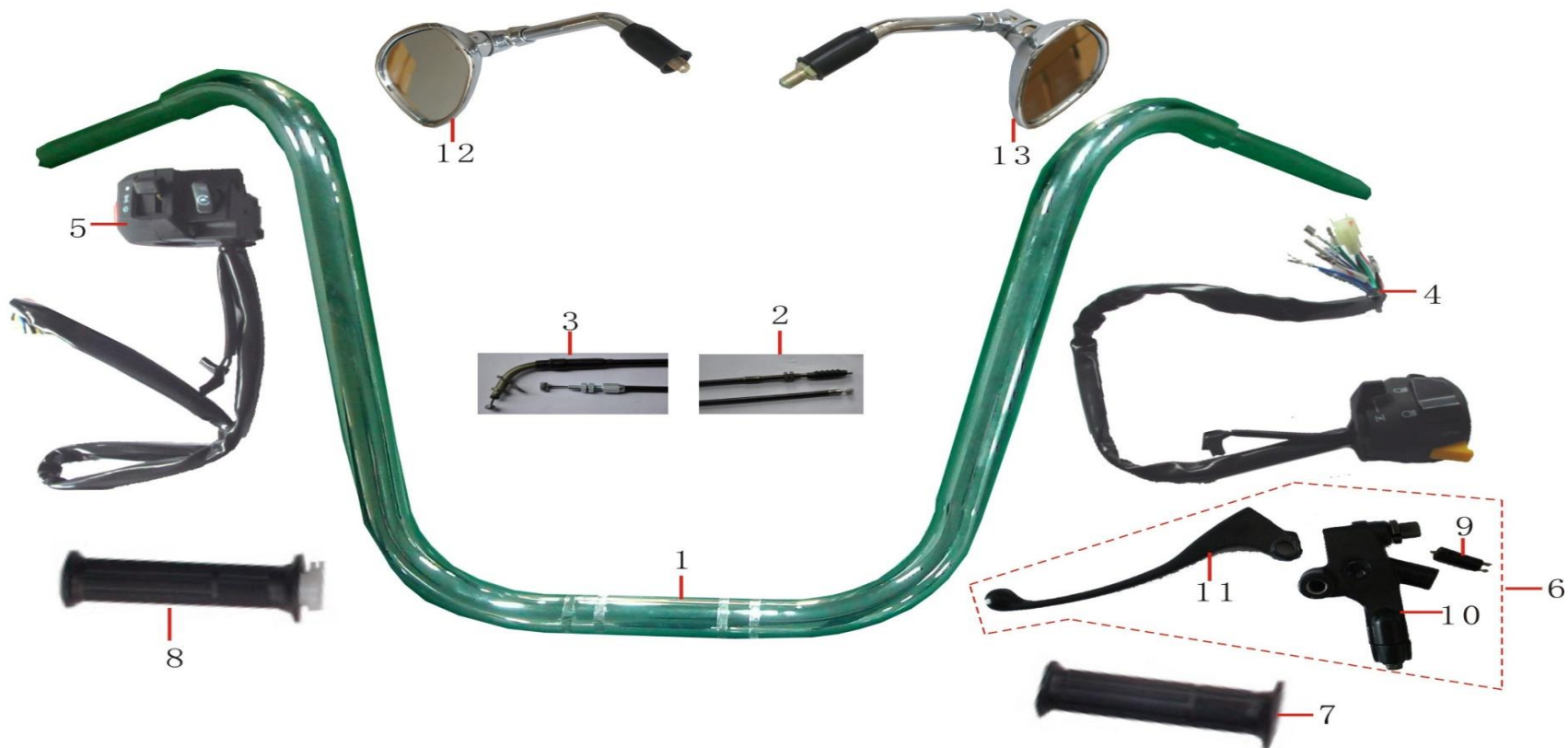
NO	PART CODE	DESCRIPTION	QTY	NO	PART CODE	DESCRIPTION	QTY
1	1.66.04.0400100	Cushion battery	1	12	1.01.18.0000700	Short spacer (BK)	3
2	1.11.04.0000200	Band,battery	1	13	1.01.18.0000600	Mat block	3
3	1.01.04.0300040	Battery 12V 9Ah	1	14	1.30.04.0410000	Cable box	1
4	1.01.04.1700000	Battery cathode anode	1	15	1.99.27.060160S	Bolt M6 x 16	6
5	1.30.04.0200100	Wire Battery (+)	1	16	1.30.04.0310000	Battery cover cap	1
6	1.56.04.0600000	Short circuit protector	1	17	1.30.04.0320000	Battery cover assy	1
7	1.99.42.050000R	Nut M5	2	18	1.30.02.0400000	Electric mount	1
8	1.99.05.0501200	x bolt M5 x 12	2	19	1.99.52.080000S	Washer 8 (Stainless)	4
9	1.30.15.0100100	Seal ring	1	20	1.99.56.080000S	Spring washer T8	4
10	1.30.04.0400100	Rubber mat	1	21	1.99.27.080160N	Bolt M8 x 16	6
11	1.99.27.080250N	Bolt M8 x 25	3				

F-4 左右开关及操纵总成(Switch.L.R and Guy cable)



NO	PART CODE	DESCRIPTION	QTY	
1	1.01.06.0400000	Left grip	1	
2	1.25.06.0500000	Clutch control assy	1	
3	1.01.06.0500300	Connector	1	
4	1.01.06.0500800	Clutch lever	1	
5	1.30.06.0250000	Switch L assy	1	
6	1.30.06.0100000	Handle bar	1	
7	1.30.06.0310000	Switch R. Assy	1	
8	1.01.06.0500900	Right grip	1	
9	1.01.06.0000200	Bar balance	2	
10	1.99.06.0602000	Bolt M6 x 20	2	
11	1.B3.06.0830000	Choke Cable	1	
12	1.68.06.0700000	Clutch control cable	1	
13	1.01.06.1300000	Mirror L.RR	1	
14	1.01.06.1400000	Mirror R.RR	1	

F-4 左右开关及操纵总成(Switch.L.R and Guy cable)



NO	PART CODE	DESCRIPTION	QTY
1	1.30.06.0110000	Handlebar	1
2	1.16.06.130000	Clutch control assy	1
3	1.16.06.0830000	Return cable	1
4	1.30.06.0250000	Switch L assy	1
5	1.30.06.0310000	Switch R assy	1
6	1.25.06.0500000	Clutch control assy	1
7	1.17.06.0400000	Left grip	1
8	1.17.06.0500900	Right grip	1
9	1.01.06.0500300	Connector	1
10	1.01.06.0500700	Shake.L	1
11	1.01.06.0500800	Clutch lever	1
12	1.45.06.1600000	Mirror L.RR	1
13	1.45.06.1700000	Mirror R.RR	1

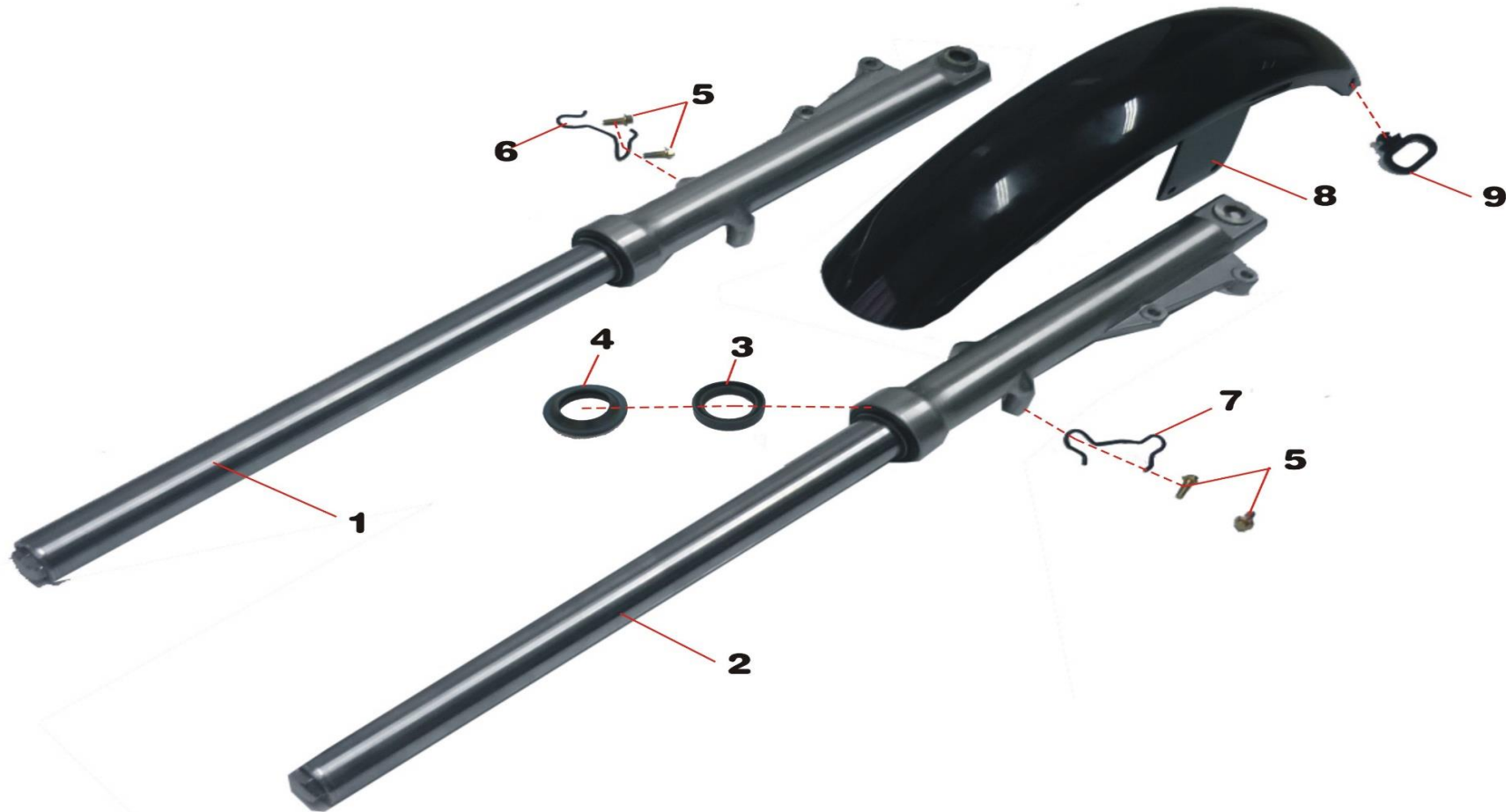
### F-5 转向器及里程表(Front shaker frame and Speedometer)



NO	PART CODE	DESCRIPTION	QTY	NO	PART CODE	DESCRIPTION	QTY
1	1.63.07.0100130	Stem comp	1	15	1.99.52.060000S	Washer 6 (6.4 x 12 x 1.5)	8
2	1.45.07.0500000	Side reflector assy	2	16	1.99.26.060250S	Bolt M6 x 25	8
3	1.99.03.0801000	Hex inner bolt M8 x 10	2	17	1.30.06.0000600	Lower base. Handlebar	2
4	1.01.06.000090S	Decoration cap	4	18	1.57.06.0000300	Cushion mat	2
5	1.99.27.060120S	Bolt M6 x 12	1	19	1.63.06.010012S	Plate mount	1
6	1.01.07.0000800	Hook	1	20	1.63.06.0000200	Lock bolt assy	4
7	1.57.07.0100200	Steering axle	1	21	1.99.03.0804000	Hex inner bolt M8 x 40	4
8	1.57.07.0000400	Lower cover	1	22	1.99.03.120350R	Bolt M12 x 35 x 1.75	2
9	1.99.72.3020500	Bearing 30205	2	23	1.53.05.0100030	Odometer	1
10	1.57.07.0000200	Top cover	1	24	1.11.05.0100410	Speedometer cable	1
11	1.57.07.0000100	Bearings nut M25 x 1 x 9.5	1	25	1.55.05.0600000	Fuel gauge	1
12	1.57.06.0000400	Stem nut M25 x 1 x 17	1	26	1.55.05.0700000	Water temp gauge	1
13	1.30.05.0100200	Odometer bracket	1	27	1.55.05.0500010	Bracket	1
14	1.30.06.0000800	Upper base. Handlebar	2				

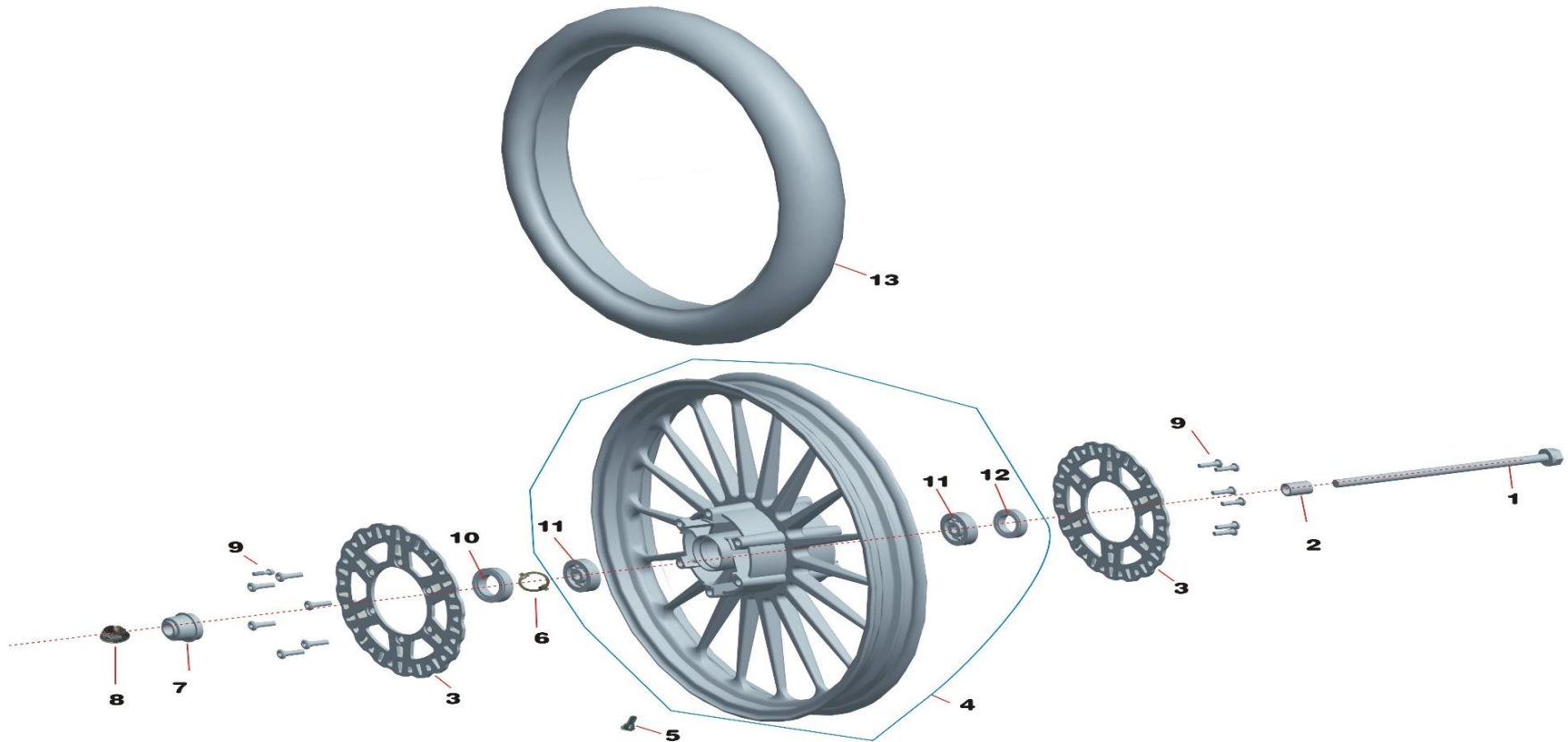


F-6 前减震器及前挡泥板 后减震器(Front suspension and Front fender.rear shock absorber)



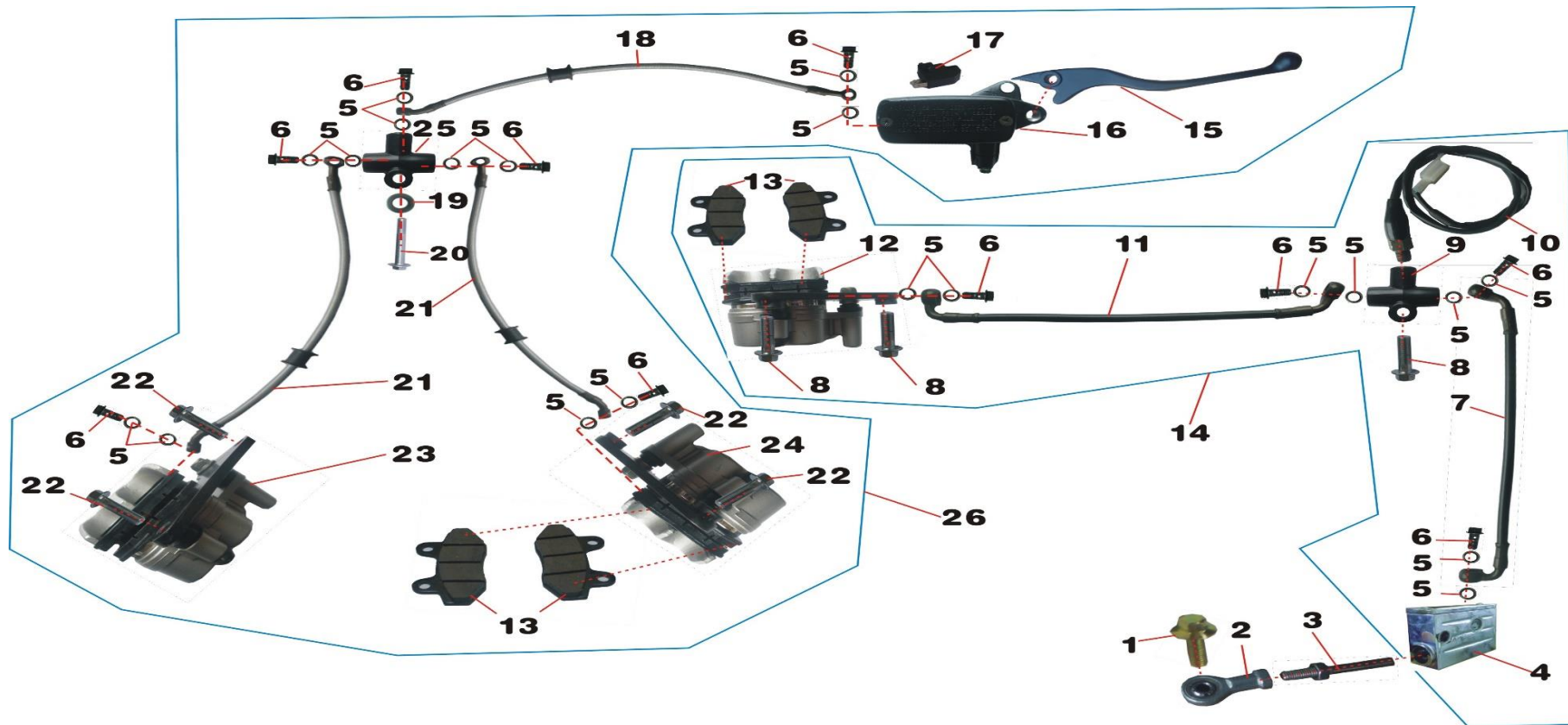
NO	PART CODE	DESCRIPTION	QTY	
1	1.30.07.0300000	Frok L. FR	1	
2	1.30.07.0400000	Fork R.FR	1	
3	1.56.07.0300900	Seal ring	2	
4	1.56.07.0301100	Dust proof seal	2	
5	1.99.26.060160H	Bolt M6 x 16	4	
6	1.57.27.0000800	Cable hook L	1	
7	1.57.27.0000900	Cable hook R	1	
8	1.63.27.0000000	Front fender (Black)	1	
9	1.11.27.0000300	Cable loop	1	

## F-7 前轮(Front wheel)



NO	PART CODE	DESCRIPTION	QTY	
1	1.63.08.0000100	Front wheel axle	1	
2	1.01.08.0001300	Outer spacer 30mm	1	
3	1.68.08.0000210	Front disc brake $\Phi 300(\text{II})$	2	
4	1.53.08.0100100	Front rim (21 x 2.5)	1	
5	1.01.10.0000500	Valve nut	1	
6	1.53.08.0400100	Steering clip	1	
7	1.53.08.0400000	Speedo drive unit	1	
8	1.56.08.0000200	Front wheel axle nut	1	
9	1.01.08.000030R	Hex inner bolt M8 x 24	1	
10	1.53.08.0000300	Seal 40 x 55 x 5	12	
11	1.99.72.6302010	Bearing 6302-2RZ/P6	1	
12	1.01.08.0000500	Outside stalk seal M22 x 42 x	1	
13	1.57.08.0001210	Front tire 80/90-21	2	

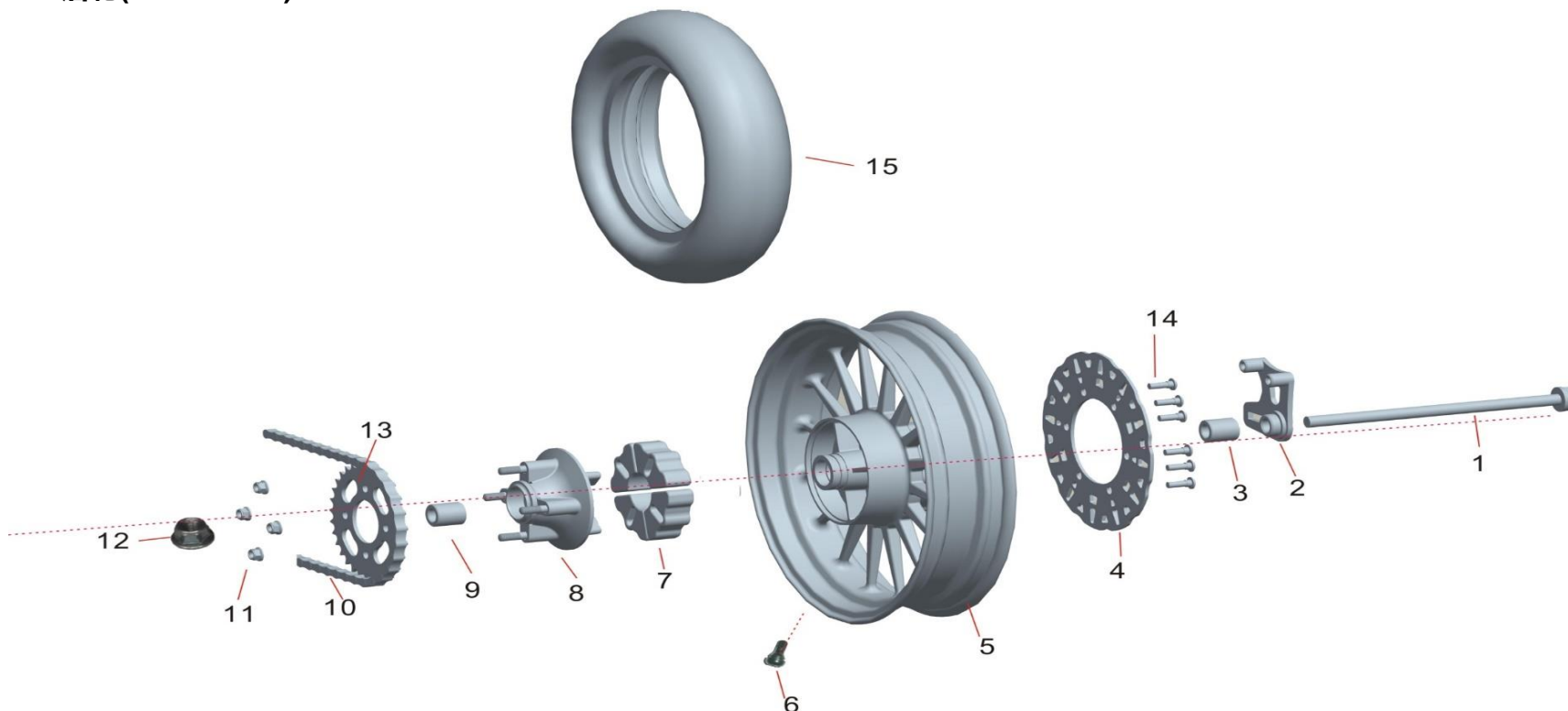
### F-8 前,后制动泵(Front&Rear brake pump assy)



NO	PART CODE	DESCRIPTION	QTY	NO	PART CODE	DESCRIPTION	QTY
1	1.99.26.060160H	Bolt M6 x 16	1	14	1.65.10.0300000	Rear brake pump assy	1
2	1.57.10.0102000	Chain	1	15	1.03.08.0201900	Right handle	1
3	1.57.10.0101000	Push pole	1	16	1.57.08.0210000	Front brake oil pump	1
4	1.57.10.0360000	Rear brale oil pump	1	17	1.01.08.0201700	Brake signal switch	1
5	1.01.08.0200100	Seal	20	18	1.57.08.0230000	Up oil pipe	1
6	1.01.08.0200200	Oil out screw	10	19	1.99.50.060000S	Seal 6	1
7	1.57.10.0320000	Up oil tube	1	20	1.99.26.0603500	Bolt M6 x 35	1
8	1.01.13.0000900	Bolt M8 x 35	3	21	1.57.08.0240000	Down oil pipe	2
9	1.57.10.0340000	Three joint	1	22	1.11.13.0000300	Bolt M8 x 32	4
10	1.57.10.0330000	Rear brake switch	1	23	1.57.08.0250000	Front brake down pump L	1
11	1.57.10.0350000	Down oil tube	1	24	1.57.08.0270000	Front brake down pump R	1
12	1.57.10.0310000	Rear brake pump	1	25	1.57.08.0260000	Front brake three joint	1
13	1.57.08.0301500	Bottom plate	6	26	1.A5.08.0210000	Front brake oil pump (Bk)	1



## F-9 后轮(Rear wheel)



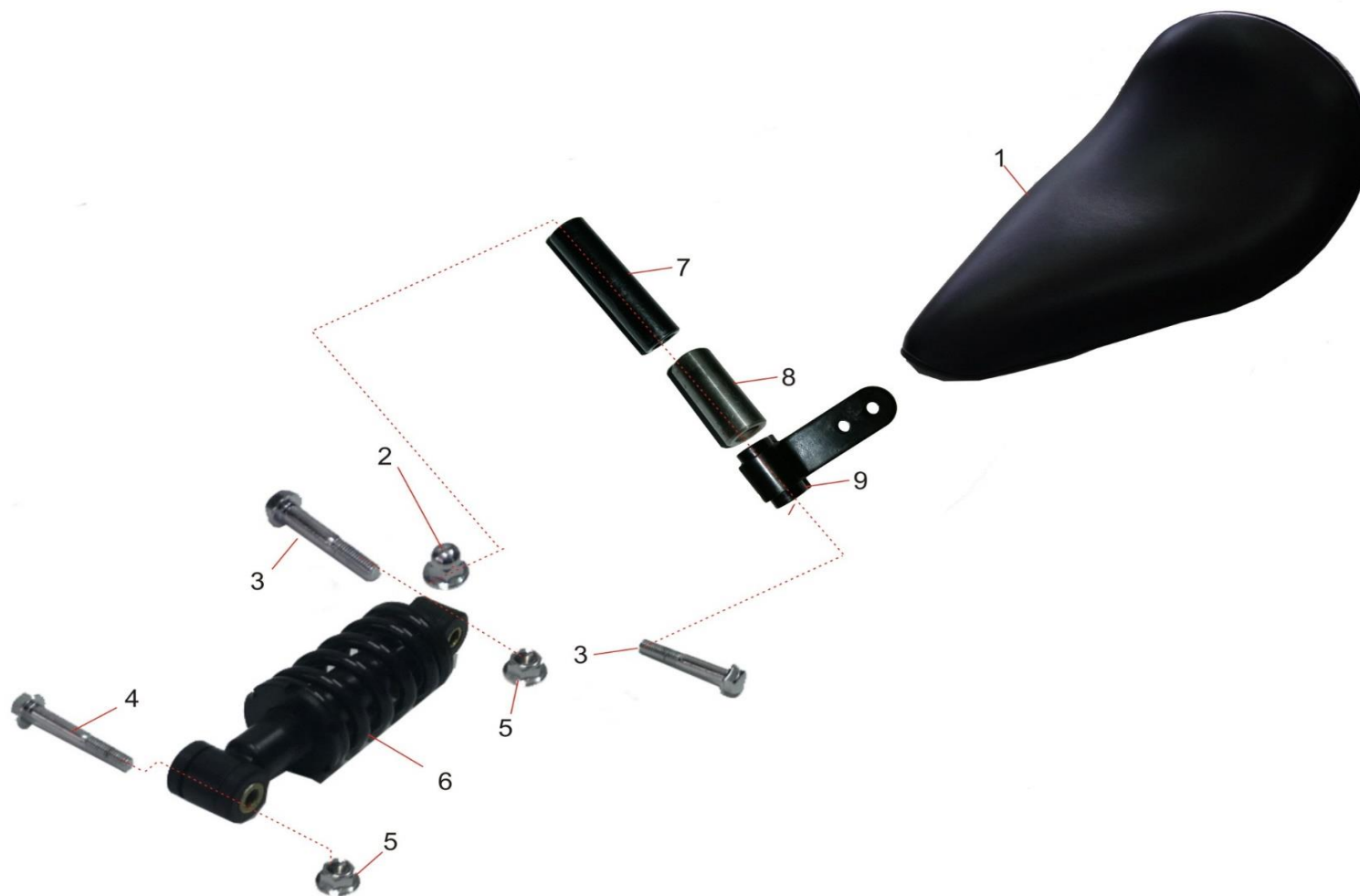
NO	PART CODE	DESCRIPTION	QTY
1	1.53.10.040000N	Rear wheel axle (14 x 330mm)	1
2	1.53.10.0300100	Mount plate.Rear brake pump	1
3	1.53.10.0001100	Rear axle spacer	1
4	1.68.10.0001710	Brake disc.RR 240mm	1
5	1.53.10.0100000	Rear rim 16 x 3.75 BK/CP	1
6	1.01.10.0000500	Valve nut	1
7	1.53.10.0000300	Buffer	4
8	1.53.10.0000600	Cushion buffer set	1
9	1.53.10.0001100	Rear axle spacer	1
10	1.99.79.3001600	Chain 530H-1 x 120L	1
11	1.99.44.100000R	Self lock nut M10 x 1.25	4
12	1.99.44.140000N	Self locking nut M14 x 1.5	1
13	1.53.10.0700000	Rear sprocket (32T,big hole)	1
14	1.01.08.000030R	Hex inner bolt M8 x 24	6
15	1.57.10.0001610	Rear tire 160/80-16 CST	1

## F-10 油箱及燃油开关(Fuel tank and Fuel switch)



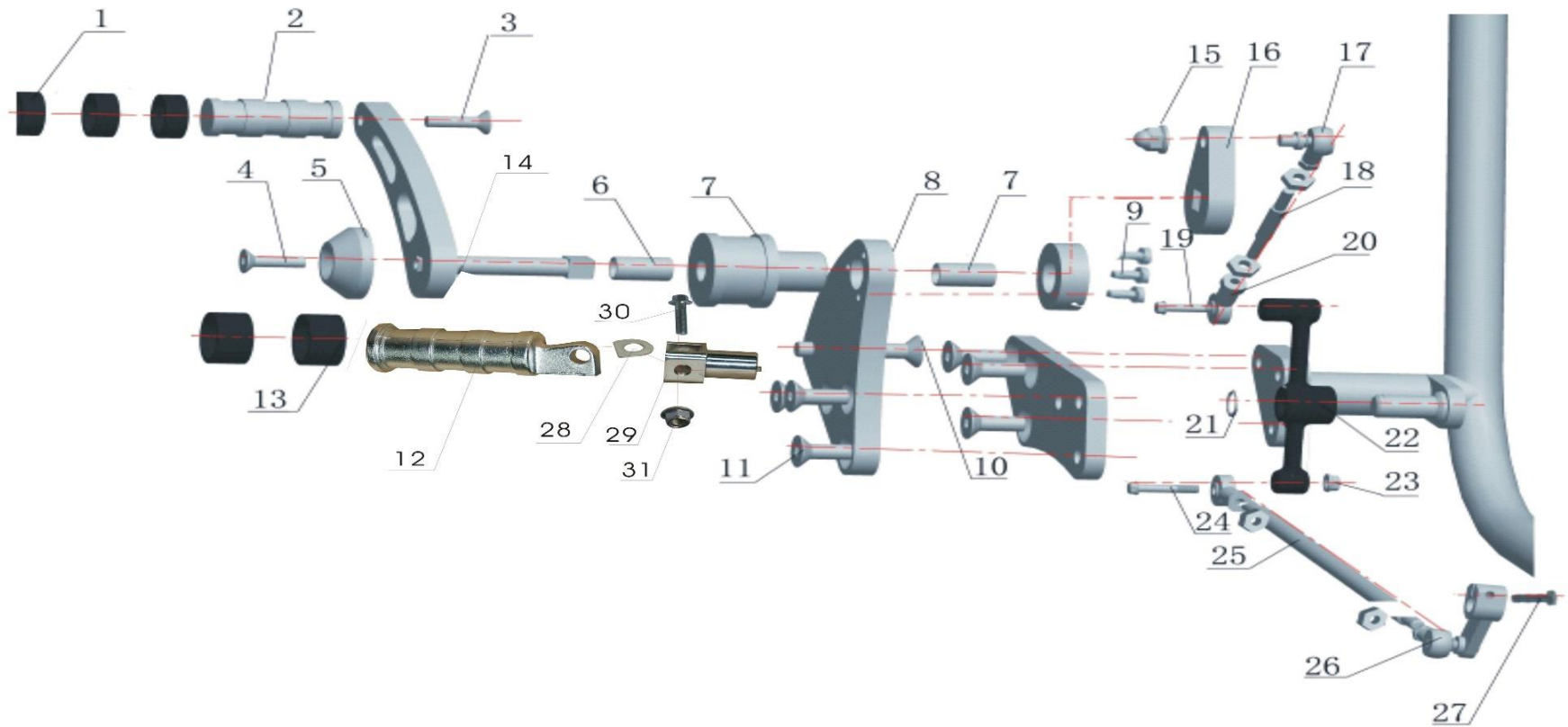
NO	PART CODE	DESCRIPTION	QTY	
1	1.30.11.020020C	Fuel tank	1	
2	1.11.04.0600300	Pipe	1	
3	1.63.11.0300000	Closing valve	1	
4	1.01.11.0000300	Oil pipe	1	
5	1.01.07.000070R	Bolt M8 x 25	4	
6	1.01.18.0000700	Short spacer (BK)	4	
7	1.11.03.0500200	Rubber ring	4	
8	1.57.15.0200100	O-ring 41.2 x 5.3	1	
9	1.57.15.0300000	Fuel tank cap (alu)	1	
10	1.03.32.0900000	Fuel pump	1	
11	1.A7.32.0900200	Oil pipe I	1	
12	1.30.05.0400000	Fuel tank sensor	1	

## F-11 座垫及后货架(Seat)



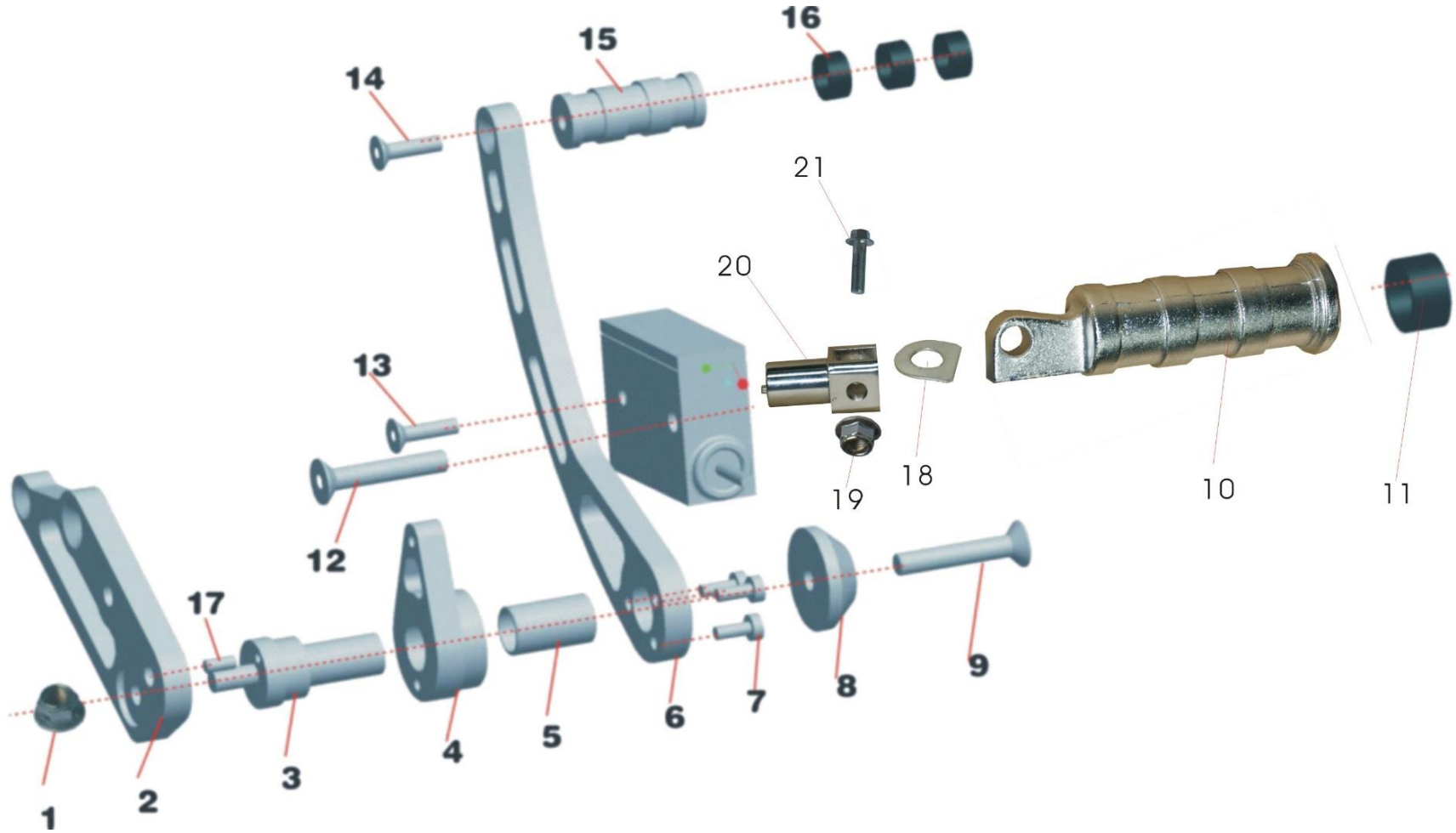
NO	PART CODE	DESCRIPTION	QTY
1	1.30.13.0100100	Seat	1
2	1.01.03.0101300	Cap nut M8	2
3	1.99.27.080500S	Bolt M8 x 50	2
4	1.99.27.0805500	Bolt M8 x 55	1
5	1.99.44.0800000	Nut M8	2
6	1.30.13.0010000	Seat damper	1
7	1.99.43.0800000	Nut M8	2
9	1.30.13.0000200	Seat bracket	1

### F-12 变速机构及换档机构(Shift gear system and Shifter)



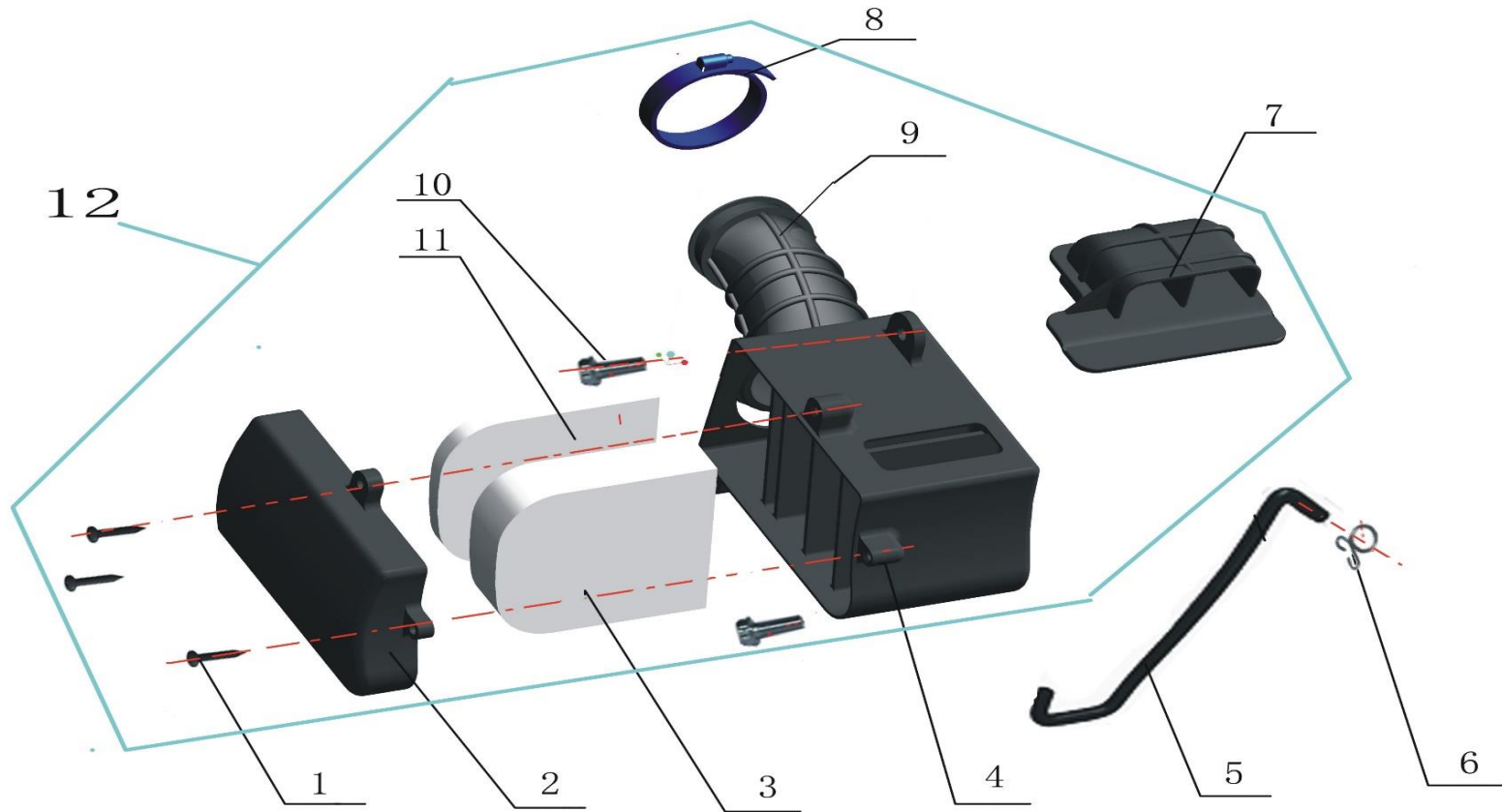
NO	PART CODE	DESCRIPTION	QTY	NO	PART CODE	DESCRIPTION	QTY
1	1.57.14.0240400	Rubber sleeve	3	16	1.53.14.0600600	Shifter pole (II)	1
2	1.63.14.0240100	Peg pole (CP)	1	17	1.63.14.0600800	Front joint	1
3	1.99.02.0802500	Hex inner bolt M8 x 25	1	18	1.30.14.0600700	Two end screw	1
4	1.99.02.060160S	Hex bolt M6 x 16	1	19	1.01.06.0500500	Screw M6 x 25	1
5	1.57.14.0600100	Connector L	1	20	1.57.10.0102000	Chain	2
6	1.57.14.0610200	Alex sleeve (small)	1	21	1.99.63.1500000	Flexible ring	1
7	1.57.14.0610100	Mounting bracket. L (CP)	1	22	1.53.14.0600600	Shifter pole (II)	1
8	1.57.14.060040S	Mounting plate. L	1	23	1.99.44.060000S	Self-locking nut M6	1
9	1.99.03.0601600	Hex bolt inter M8 x 10	3	24	1.99.26.0603500	Bolt M6 x 35	1
10	1.99.02.1004500	Hex inner bolt M10 x 1.5 x 45	1	25	1.02.14.0600600	Two end bolt 245mm	1
11	1.99.02.100250N	Bolt M10 x 1.5 x 25	6	26	1.17.14.0800000	Shake lever assy	1
12	1.57.14.0250200	Left peg (folded)	1	27	1.99.24.0602000	Bolt M6 x 20	1
13	1.57.14.0230300	Rubber sleeve (II)	3	28	1.57.14.0250400	Fflexible washer	1
14	1.57.14.0600200	Shift pole (I)	1	29	1.57.14.0250100	Peg mount	1
15	1.01.03.0101300	Cap nut M8	1	30	1.01.21.0001100	Bolt M10 x 40	1

### F-13 后制动机构(Rear brake pole)



NO	PART CODE	DESCRIPTION	QTY		NO	PART CODE	DESCRIPTION	QTY
1	1.99.44.100000R	Self lock nut M10 x 1.25	1		12	1.99.02.1006500	Bolt M10 x 1.5 x 65	1
2	1.57.14.020010S	Mounting bracket. R (CP)	1		13	1.99.02.0803500	Hex inner bolt M8 x 35	1
3	1.57.14.0200000	Control spacer	1		14	1.99.02.0802500	Hex inner bolt M8 x 25	1
4	1.57.14.0220000	Pole bracket. Rear brake	1		15	1.63.14.0240100	Peg pole (CP)	1
5	1.57.14.0220200	Spacer (big)	1		16	1.57.14.0240300	Rubber sleeve (IV)	3
6	1.57.14.0200200	Rear brake pole	1		17	1.57.14.0220300	Pin (6 x 18)	1
7	1.99.03.0601600	Hex bolt inter M8 x 10	3		18	1.57.14.0250400	Flexible washer	1
8	1.57.14.0200300	Right connect CP	1		19	1.99.44.100000R	Self lock nut M10 x 1.25	1
9	1.99.02.1003500	Hex inner bolt M10 x 1.5 x 35	1		20	1.57.14.0250100	Peg mount	1
10	1.57.14.0240400	Rubber sleeve	3		21	1.01.21.0001100	Bolt M10 x 40	1
11	1.57.14.0250300	Right peg (folded)	1					

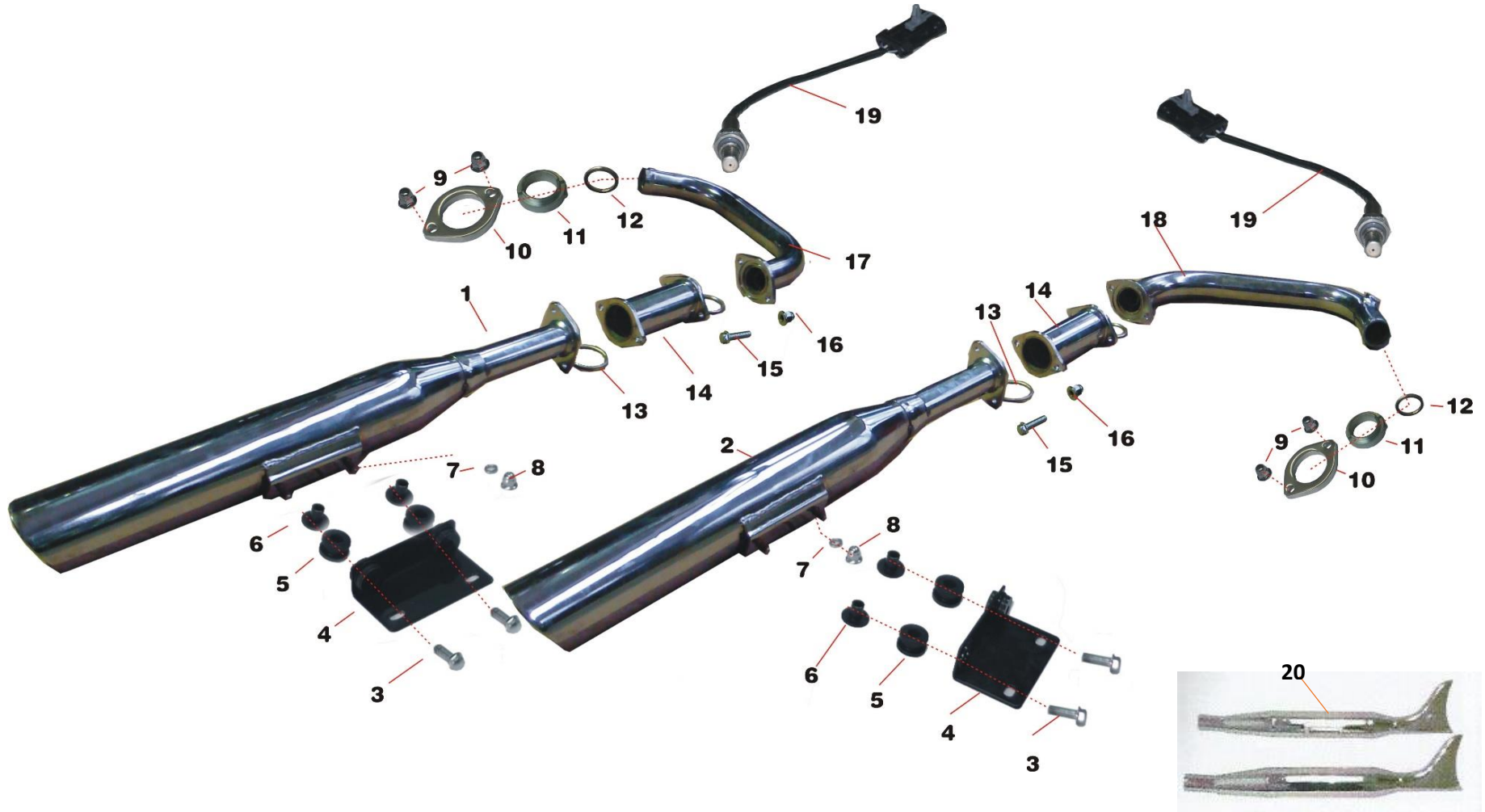
F-14 空滤器总成(Air filter assy)



NO	PART CODE	DESCRIPTION	QTY	
1	1.99.15.4202400	Self-tapping screw ST4.2 x 24	3	
2	1.63.17.0001300	Air filter upper shell	1	
3	1.63.17.0001100	Air filter core	1	
4	1.63.17.0001400	Air filter bottom shell	1	
5	1.63.17.0000500	Circuit pipe	1	
6	1.01.17.0000900	Tight wreath of steel wire flexib	1	
7	1.A7.17.0000200	Outlet air pipe	1	
8	1.01.17.0000100	Hoop	1	
9	1.01.17.0001000	The air filter enters the draft	1	
10	1.99.26.060120H	Bolt M6 x 12	2	
11	1.63.17.0001200	Screen,filter	1	
12	1.A7.17.0000000	Air filter assy	1	



# F-15 排气消声器(Exhaust-gas muffler)



NO	PART CODE	DESCRIPTION	QTY	NO	PART CODE	DESCRIPTION	QTY
1	1.63.18.0100200	Left rear exhaust	1	11	1.01.18.0300000	Tube ends	2
2	1.63.18.0200200	Right rear exhaust pipe	1	12	1.01.18.0000210	Seal washer	2
3	1.99.24.0802500	Hex bolt inter M8 x 40	4	13	1.10.18.0300200	Seal washer Φ43 x Φ52	4
4	1.57.18.0500000	Exhaust mount L	2	14	1.10.18.0310000	Exhaust pipe joint	2
5	1.01.18.0000600	Mat block	4	15	1.99.26.0602200	Screw M6 x 22	8
6	1.01.18.0000700	Short spacer (BK)	4	16	1.99.44.0600000S	Self-locking nut M6	8
7	1.99.56.0800000S	Spring washer T8	4	17	1.63.18.0100110	Exhaust pipe	1
8	1.99.42.0800000	Nut M8 (Stainless)	4	18	1.63.18.0200110	Exhaust pipe	1
9	1.01.18.0000300S	Cap nut M8	4	19	1.A7.32.0600000	Oxygen sensor	2
10	1.01.18.0000100	Exhaust flange	2	20	MFL-FISH-LFG-UNI	Fish Muffler LH/RH (SET)	2

F-16 后轮罩(Rear fender)



NO	PART CODE	DESCRIPTION	QTY	NO	PART CODE	DESCRIPTION	QTY
1	1.11.21.0000800	Rubber,RR,Fender side	1	9	1.01.08.000030R	Hex inner bolt M8 x 24	2
2	1.30.21.000010C	Fender,RR Black	1	10	1.30.21.0000100	Tail cover	1
3	1.16.08.0000300	Hex inner bolt M8 x 20	2	11	1.99.24.060140S	Bolt M6 x 14	2
4	1.63.21.0001000	Rear side reflector L	1	12	1.99.50.0600000	Washer 6	2
5	1.63.21.0001100	Rear side reflector R	1	13	1.53.21.0010000	Tail light mount bracket	1
6	1.30.21.0120000	Support. Rear fender R	1	14	1.53.21.0020000	License plate bracket	1
7	1.99.03.080250S	Hex inner bolt M8 x 25	2	15	1.01.03.0100400	Cap nut M6	4
8	1.30.21.0110000	Support. Rear fender L	1	16	1.45.21.0100000	Rear reflector assy(E)	1



**END**